



Durham Meadoway Visioning Study

Town of Whitby Active Transportation and Safe Roads Advisory Committee – February 9, 2023



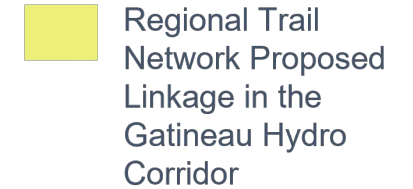
What is the Durham Meadowway?

- The Durham Meadowway is a proposed active transportation corridor and greenspace connecting Rouge National Urban Park in the City of Pickering to Simcoe Street in the City of Oshawa.
- The Durham Meadowway will connect four municipalities along 27 kilometres of the Gatineau Hydro Corridor.

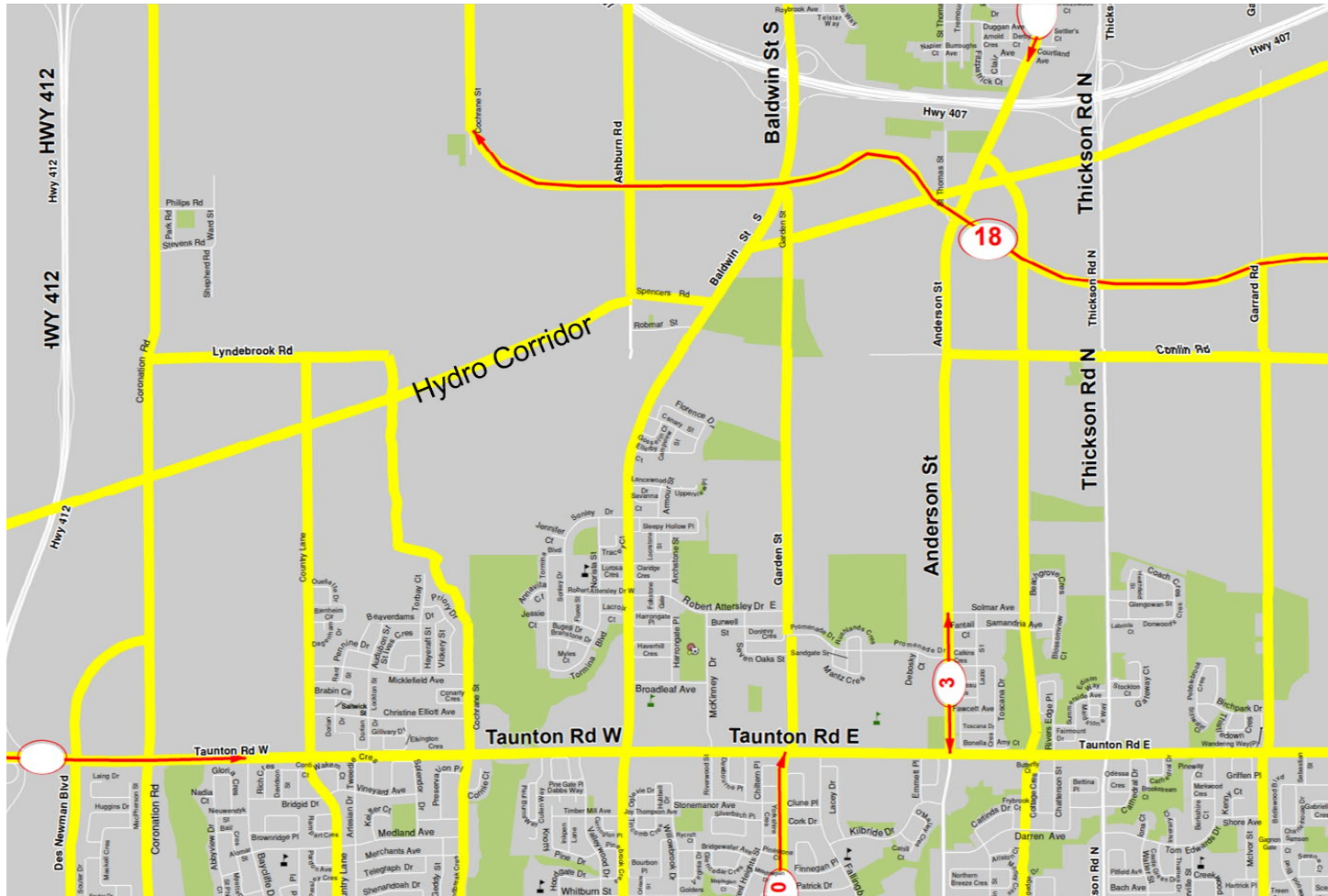


Study Area










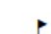






Town of Whitby Active Transportation Plan (2021)



Legend

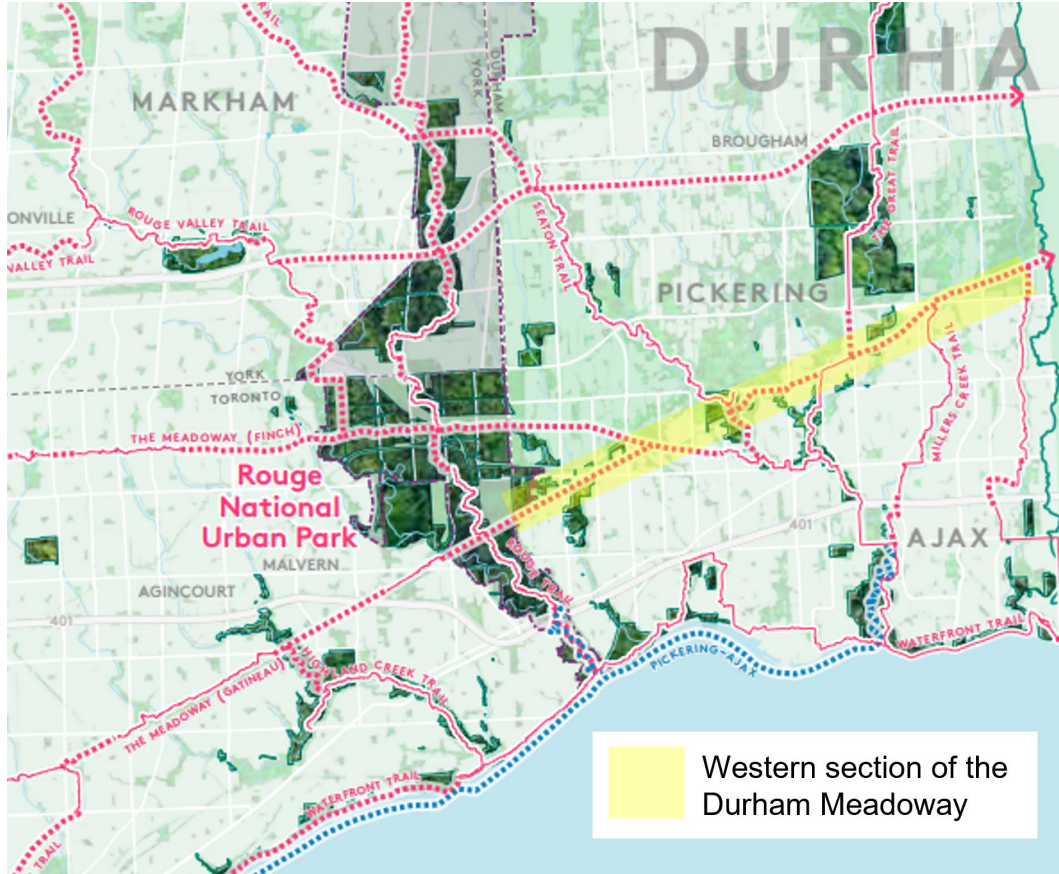
-  Spine Network
-  Priority Project Location

Key Destinations

-  Durham Region Headquarters
-  Town of Whitby Municipal Building
-  Arena
-  Elementary School
-  Secondary School
-  College
-  Community Centre
-  GO Station
-  Library
-  Recreation Centre

Combined excerpts from Maps 4 and 5 – Priority Projects and Existing and Recommended Spine Network Whitby South and North, hydro corridor noted.

Greater Toronto Region Trail Network



Excerpt from the Greater Toronto Region Trail Network concept plan illustrating the connectivity of the Durham Meadowway to other major GTA trails.

Source: [Trail Strategy for the Greater Toronto Region, 2019](#)

Visioning Study Overview

Objectives

1. Develop a coordinated vision and guiding principles to support decision-making.
2. Confirm a functional alignment for a multi-use trail.
3. Articulate potential experiences, activities, amenities and gateways that could be programmed or evolve over time at locations along the corridor.
4. Develop illustrations that will inform the overall look of the future Durham Meadoway.

Area Municipal and Agency Stakeholders

Region of Durham	Area Municipalities	Agencies
<p>Transportation Planning Works</p> <p>Economic Development & Tourism</p> <p>Sustainability</p> <p>Finance</p> <p>Durham Region Transit</p> <p>Durham OneNet Inc.</p>	<p>Town of Ajax</p> <p>City of Pickering</p> <p>Town of Whitby</p> <p>City of Oshawa</p>	<p>Toronto and Region Conservation Authority</p> <p>Central Lake Ontario Conservation Authority</p> <p>Ministry of Transportation Ontario</p> <p>Infrastructure Ontario</p> <p>Hydro One</p> <p>Parks Canada</p> <p>City of Toronto</p>

Active
Transportation
Committees

Important Dates



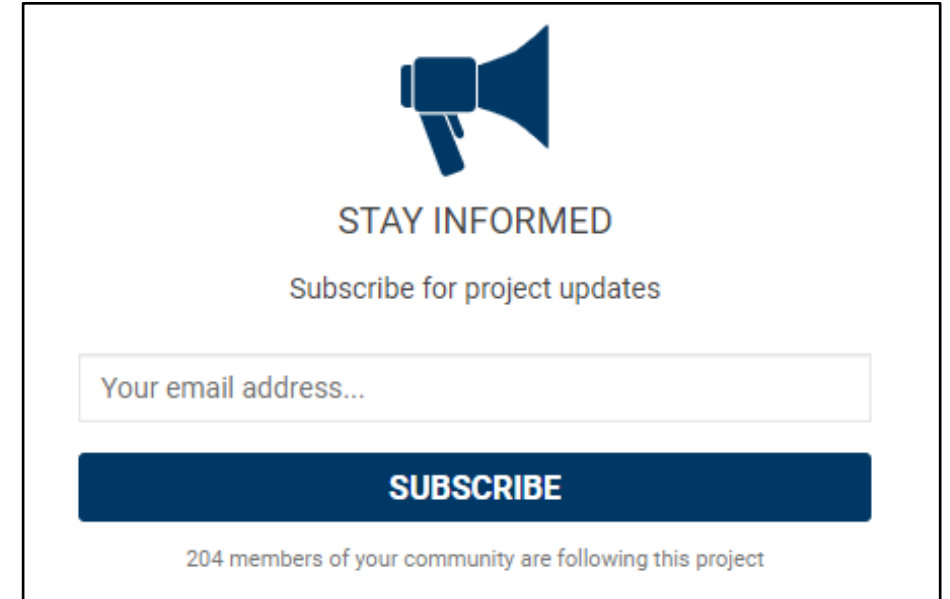
Phase 1 Community Engagement

In Phase 1, community input is being sought on the following:

- The overarching vision for the Durham Meadoway and the guiding principles that will support the vision
- The route options
- Amenities and programming that they would like to see incorporated into the design or evolve over time along the corridor

Engagement opportunities in this phase include:

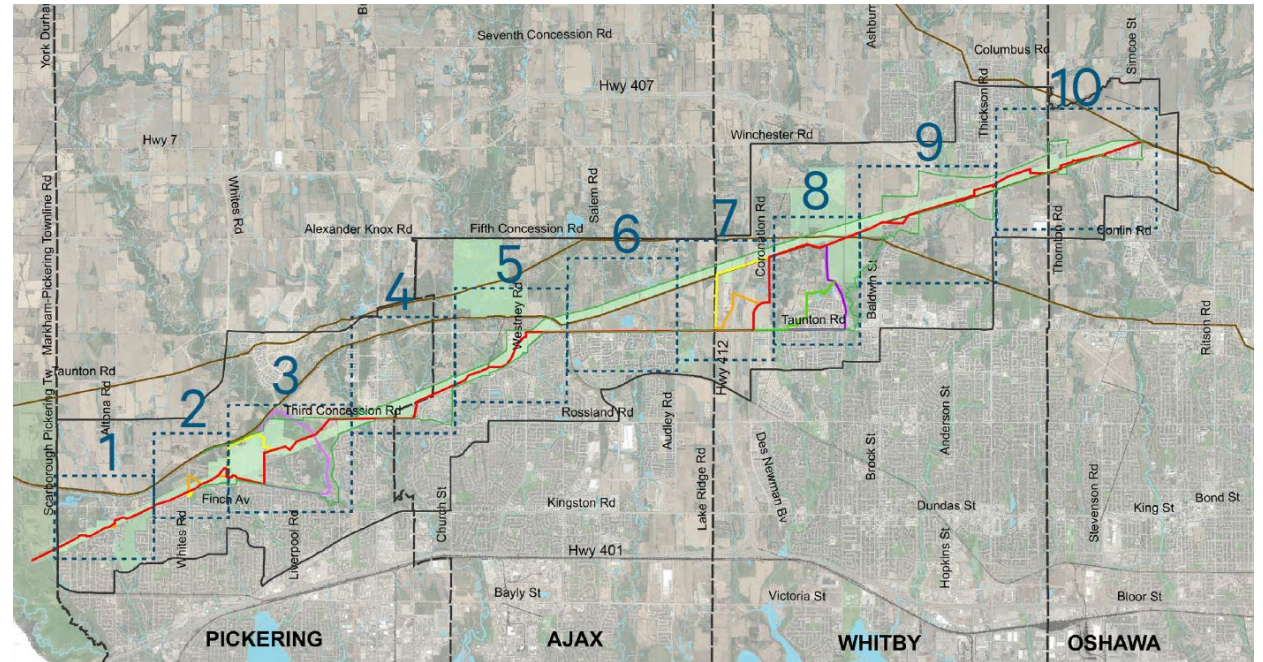
- Two charrette-style open houses on January 17 (Whitby and Oshawa focus) and January 19 (Pickering and Ajax focus).
- One online survey which will conclude on February 13.

A graphic of a sign-up form for project updates. At the top is a blue megaphone icon. Below it, the text 'STAY INFORMED' is centered. Underneath is the text 'Subscribe for project updates'. There is a text input field with the placeholder 'Your email address...'. Below the input field is a large blue button with the word 'SUBSCRIBE' in white. At the bottom, it says '204 members of your community are following this project'.

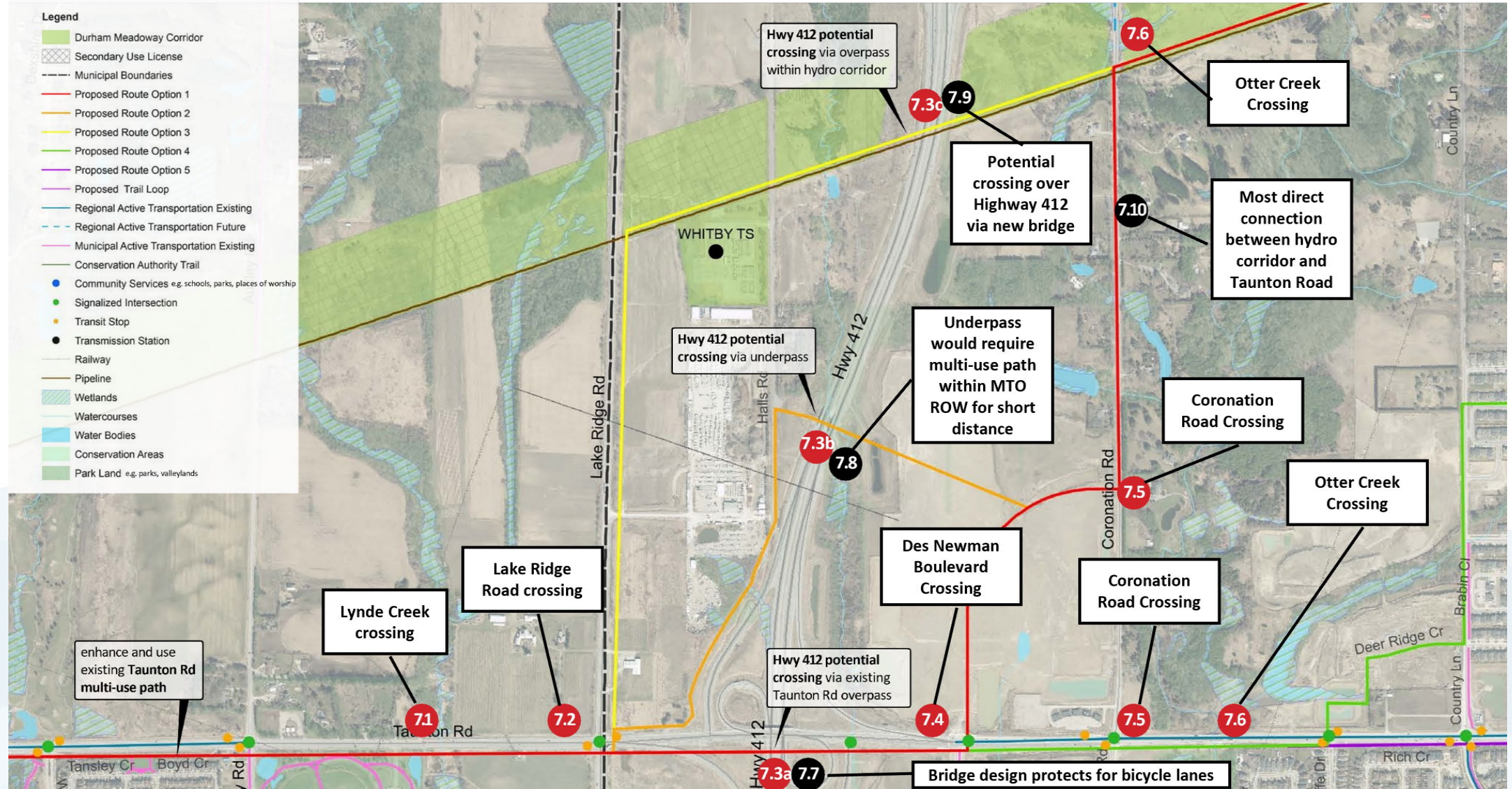
Visit yourvoice.durham.ca/durham-meadoway to subscribe for updates.

Route Options

- The study area has been divided into 10 segments.
- Up to 5 alternative route alignments have been identified.
- Route options have been identified where the multi-use path may need to be located outside of the hydro corridor to avoid private leases or to ensure that users can cross busy roads safely.
- The Primary Route is the route that provides the best continuous end-to-end connection that will ideally be implementable within the short-term (5-10 years).

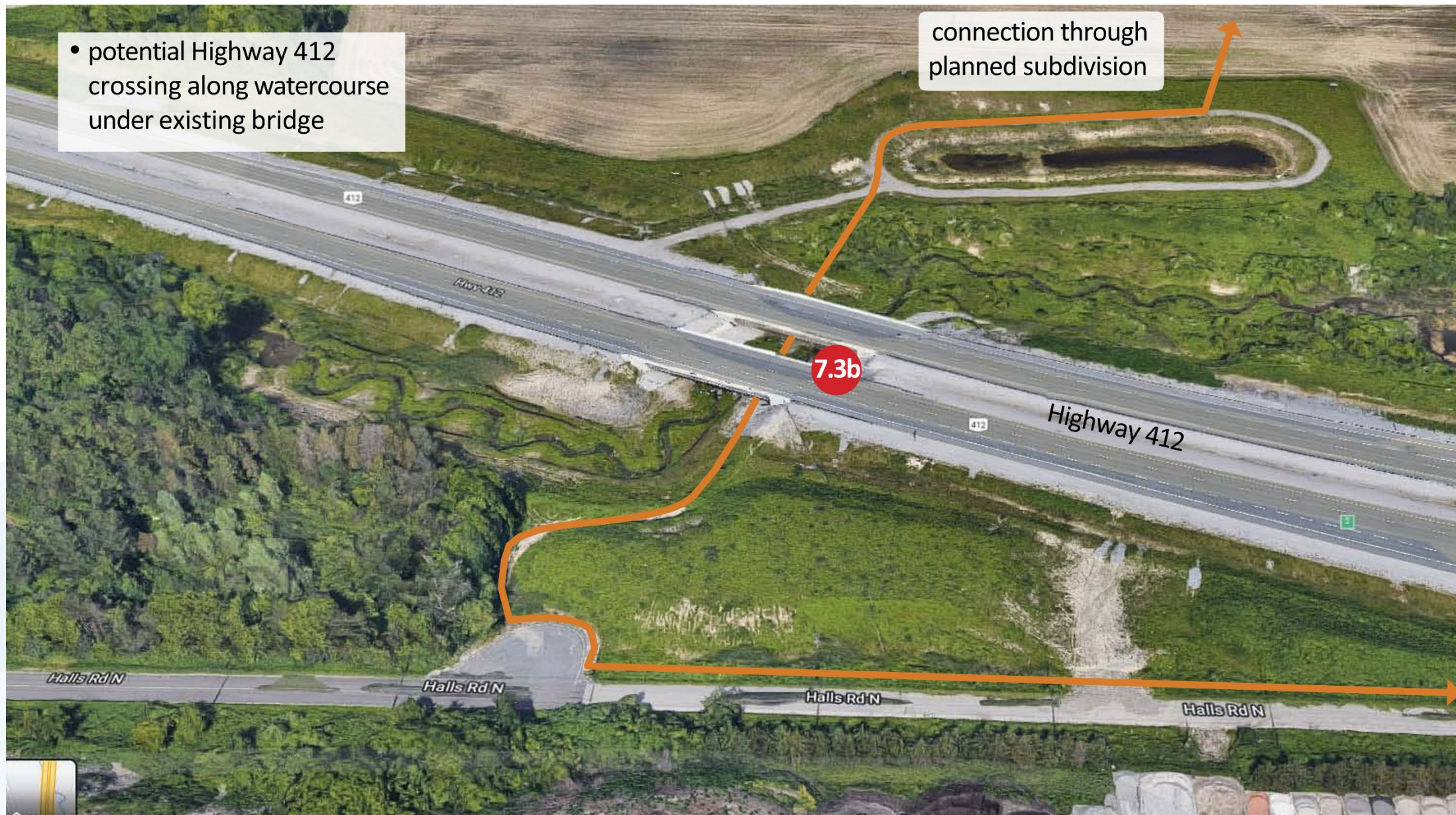


Segment 7: Audley Road to Coronation Road

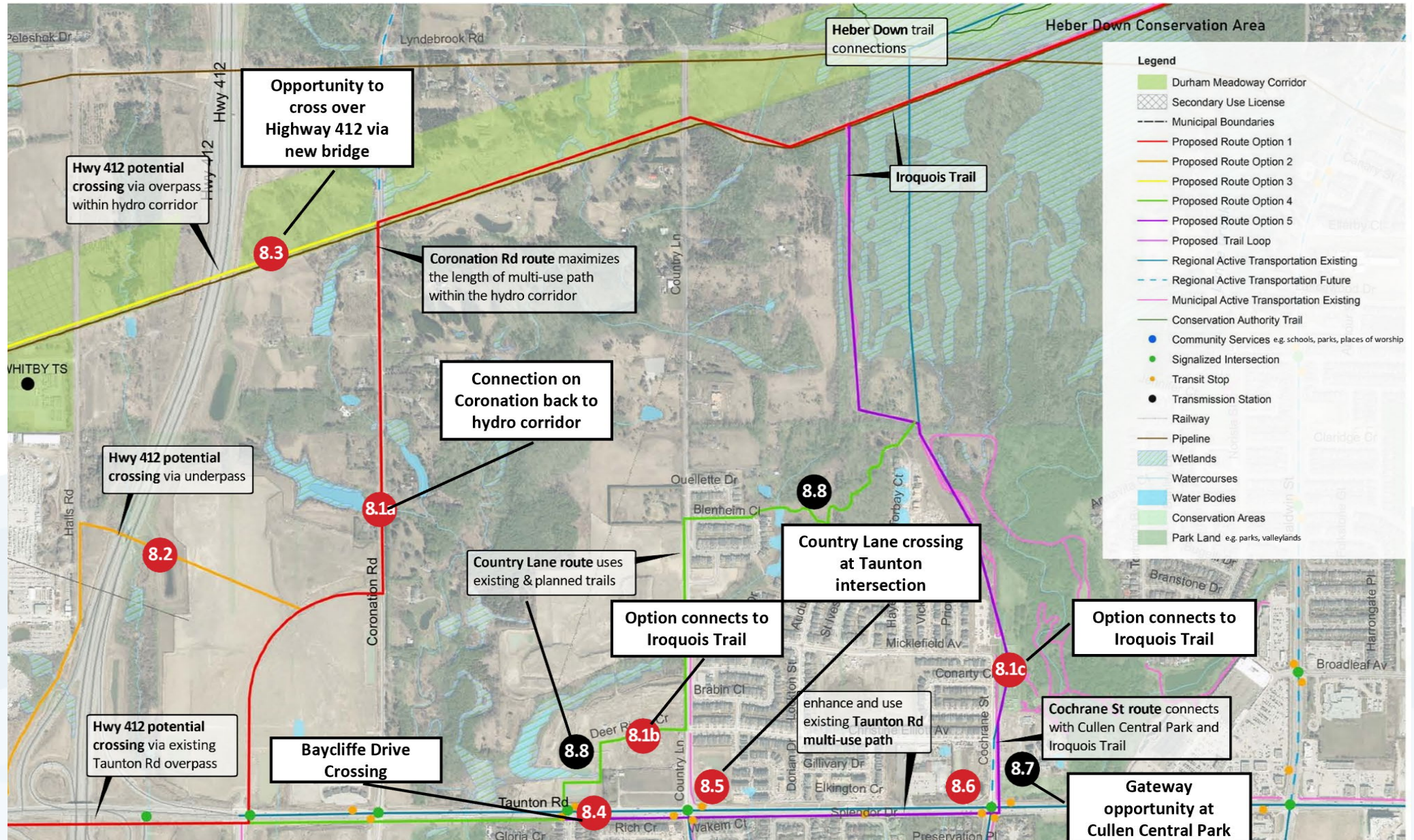


Segment 7: Audley Road to Coronation Road

- potential Highway 412 crossing along watercourse under existing bridge



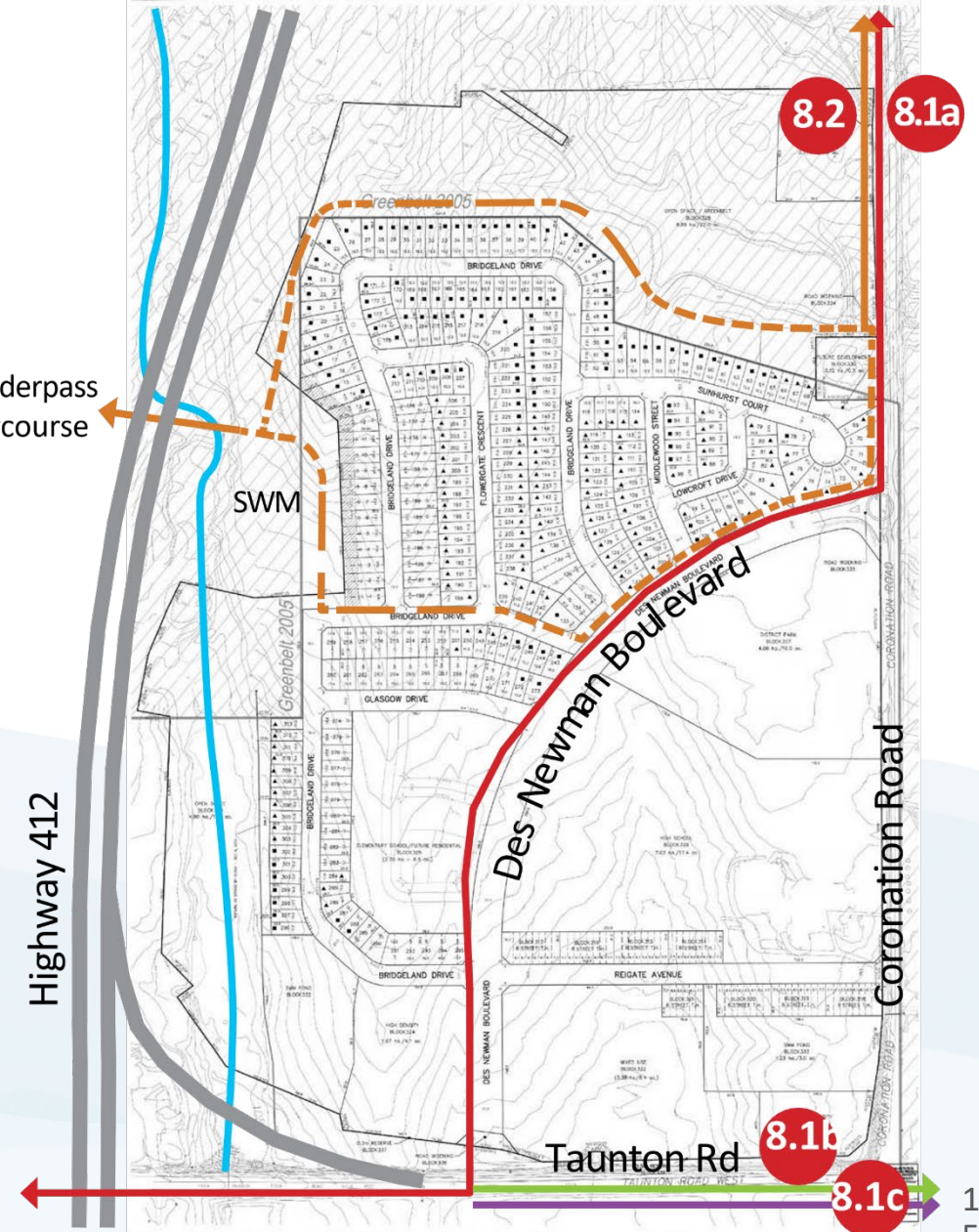
Segment 8: Coronation Road to Cochrane Street



Segment 8: Coronation Road to Cochrane Street

- 8.1a** • Multi-use path goes along Des Newman Boulevard to Coronation Road
- 8.2** • Multi-use path goes under Highway 412
 - Option: along Des Newman Boulevard through residential subdivision
 - Option: around subdivision through green lands

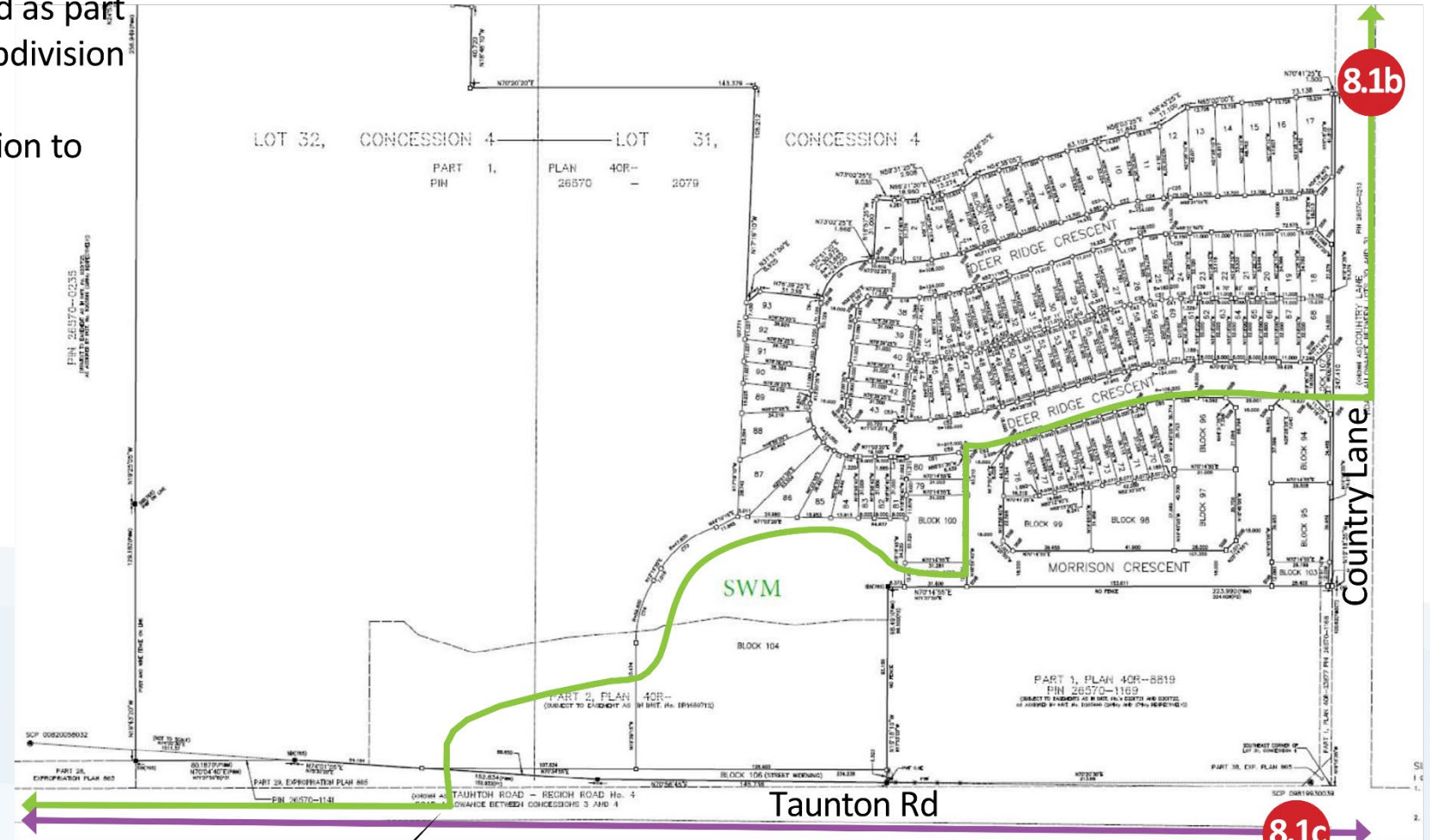
8.2 potential underpass along watercourse



Segment 8: Coronation Road to Cochrane Street

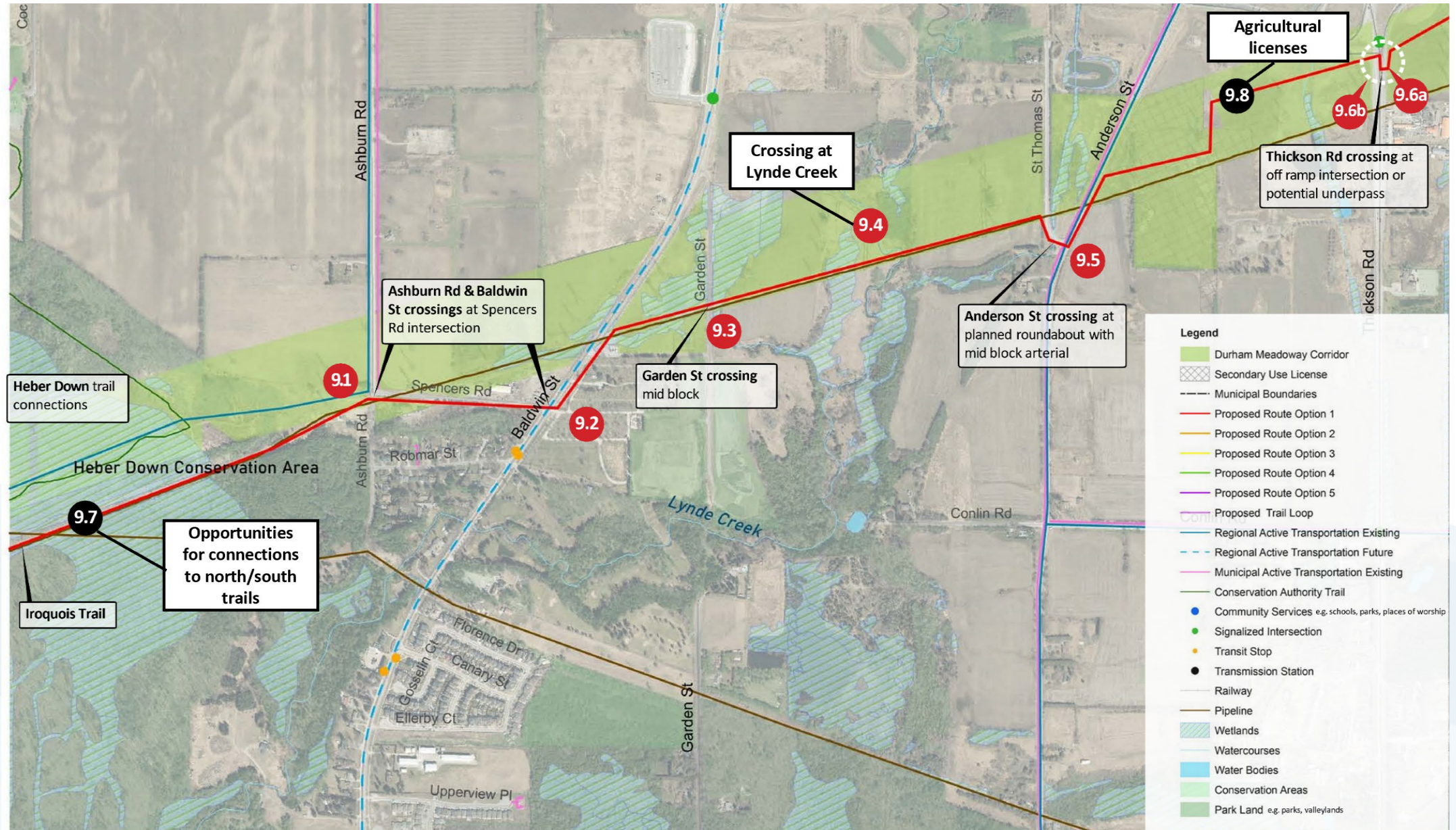
8.1b

- Utilize trail planned as part of draft plan of subdivision implementation
- On-street connection to Country Lane

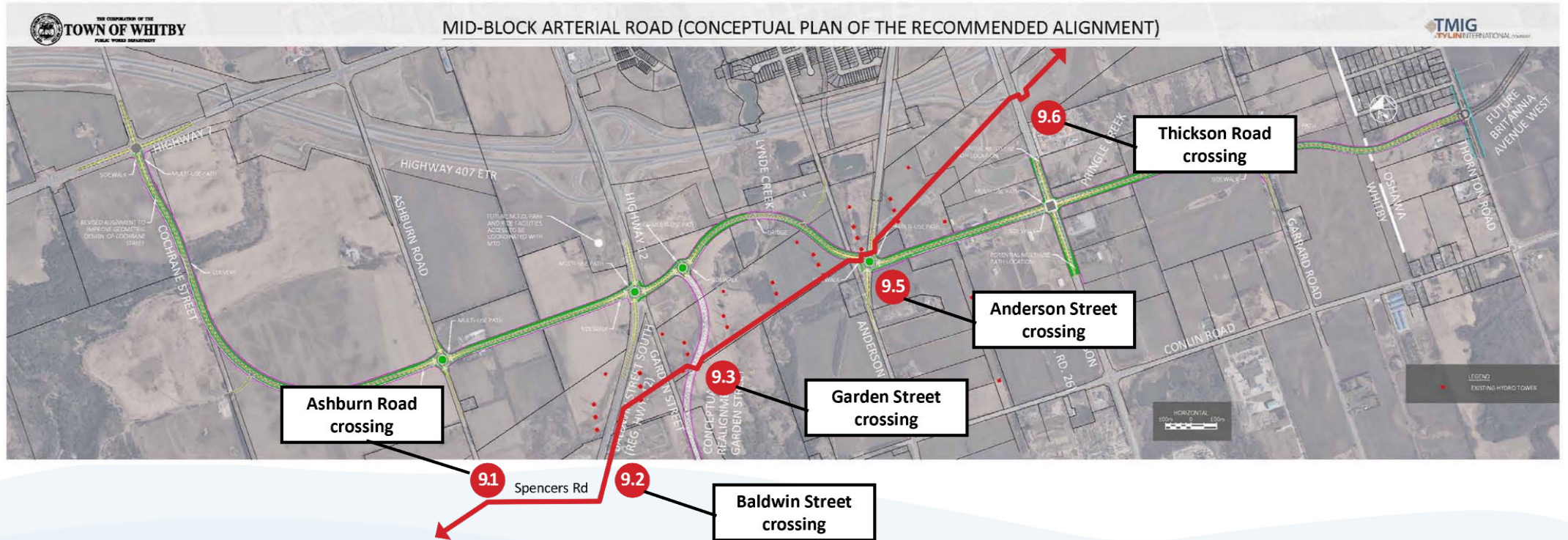


Baycliffe Drive intersection

Segment 9: Cochrane Street to Thickson Road



Segment 9: Cochrane Street to Thickson Road



Segment 9: Cochrane Street to Thickson Road

- Multi-use path within hydro corridor
- Crosses the Mid-Bloc Arterial and Anderson Street at planned roundabout



Beyond the multi-use path

The Visioning Study will also identify enhancements and amenities that will help foster a distinctive sense of place and make the multi-use path easier and more comfortable to use.

Lighting



Events and activities



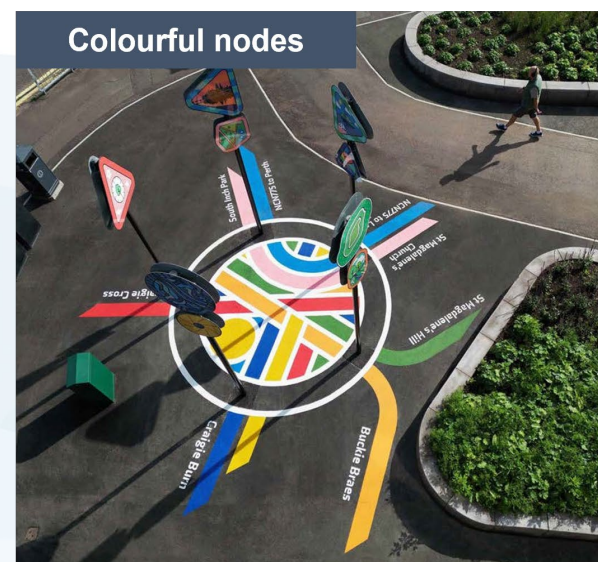
Places to sit



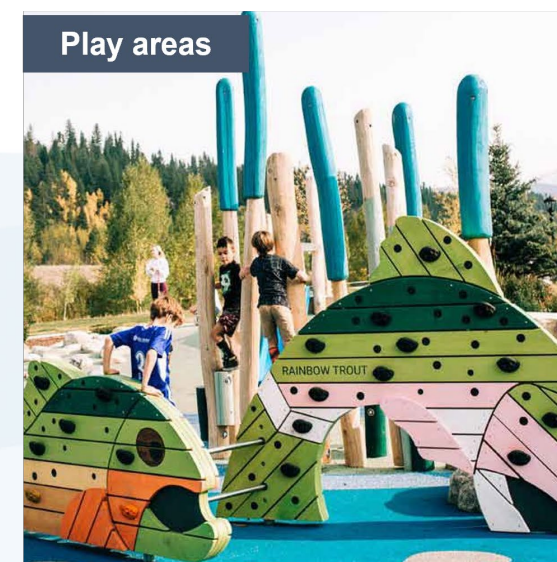
Wayfinding



Colourful nodes



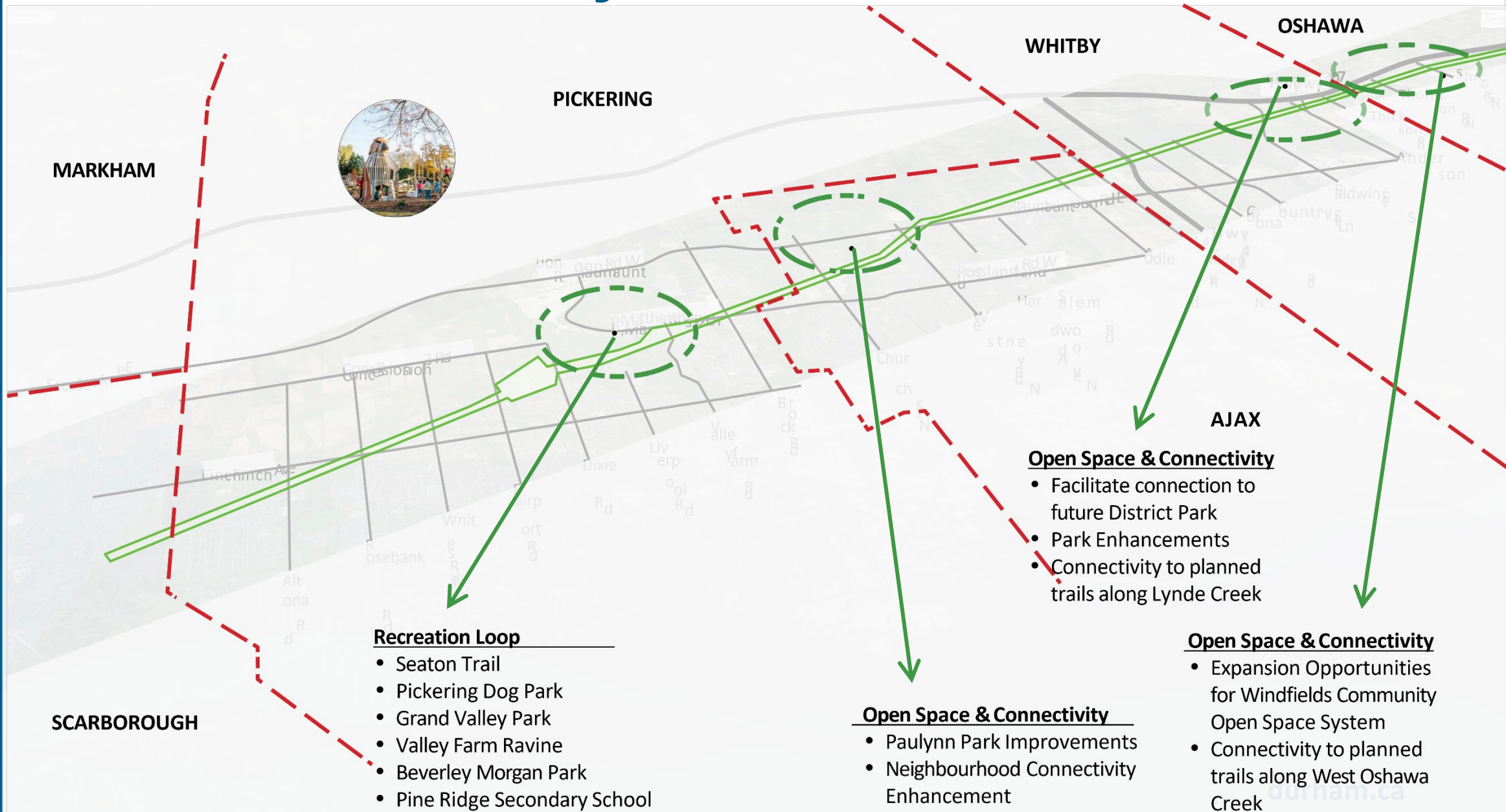
Play areas



Public and community art

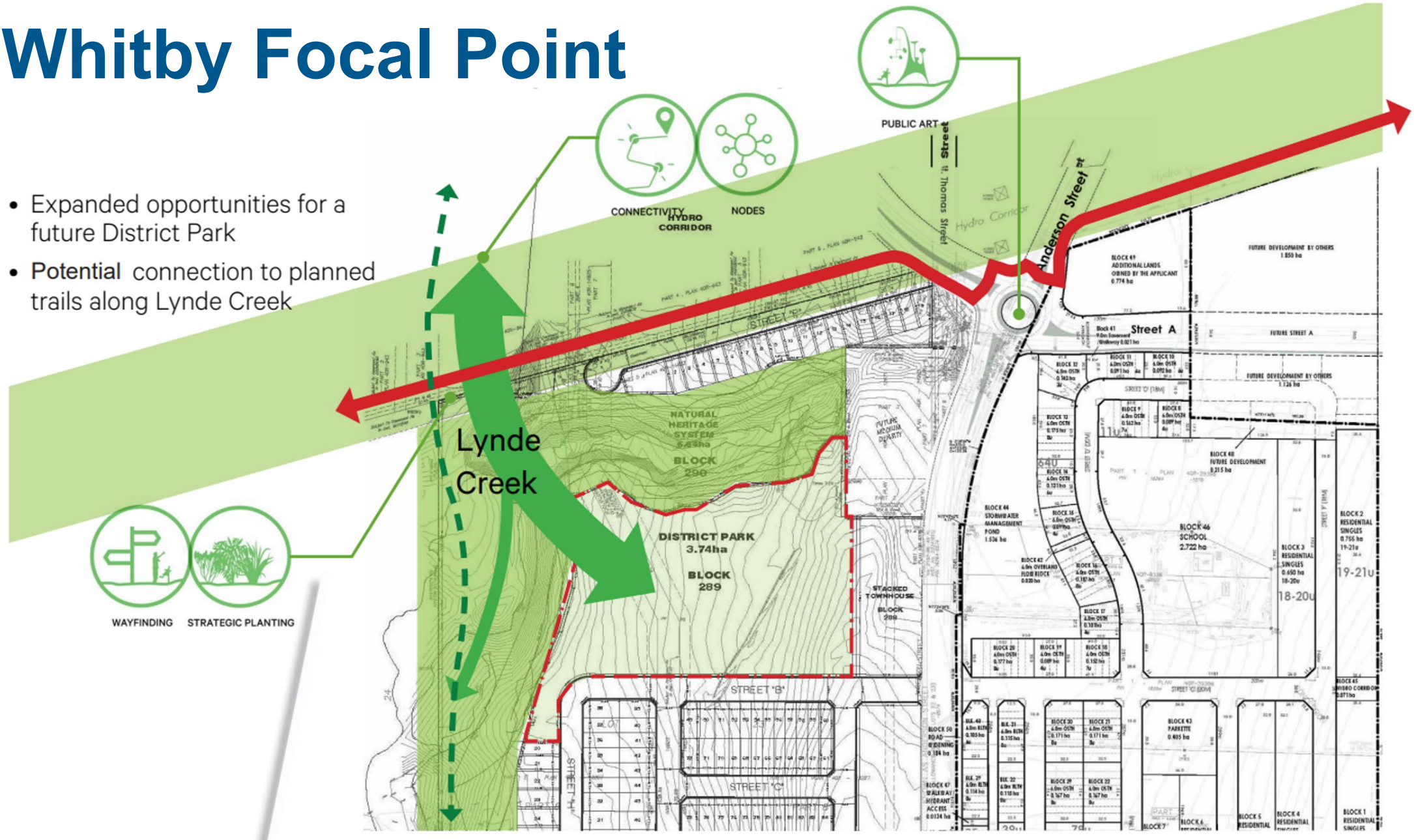


Focal Points Study



Whitby Focal Point

- Expanded opportunities for a future District Park
- Potential connection to planned trails along Lynde Creek



Next Steps

Complete Phase 1 of the project:

- Consolidate feedback received from the community in a 'What We Heard' report, which will be made available on the project website (<https://yourvoice.durham.ca/durham-meadoway>).
- Provide the Region's Planning and Economic Development Committee (PEDC) with a project update.
- Complete evaluation of the route options and identify a preferred alignment.
- Revise vision and guiding principles based on the input received.

Initiate Phase 2 of the project:

- Develop a concept plan for the user experience, amenities and activities.
- Create draft visualizations.
- Obtain input from Municipal and Agency Stakeholders on the draft concept plan and visualizations.
- Host 2nd Public Open House (April 2023).
- Provide the Region's Planning and Economic Development Committee with a project update.

Thank you

For more information:

Regional Municipality of Durham (Planning Division –
Transportation Planning Section)

- Greg Pereira, Manager
 - Greg.Pereira@durham.ca
- Alia Tulloch, Transportation Planning Analyst
 - Alia.Tulloch@durham.ca

To stay in the loop:

Subscribe for project updates on [the Durham Meadoway webpage](#).

Durham Meadoway Visioning Study

