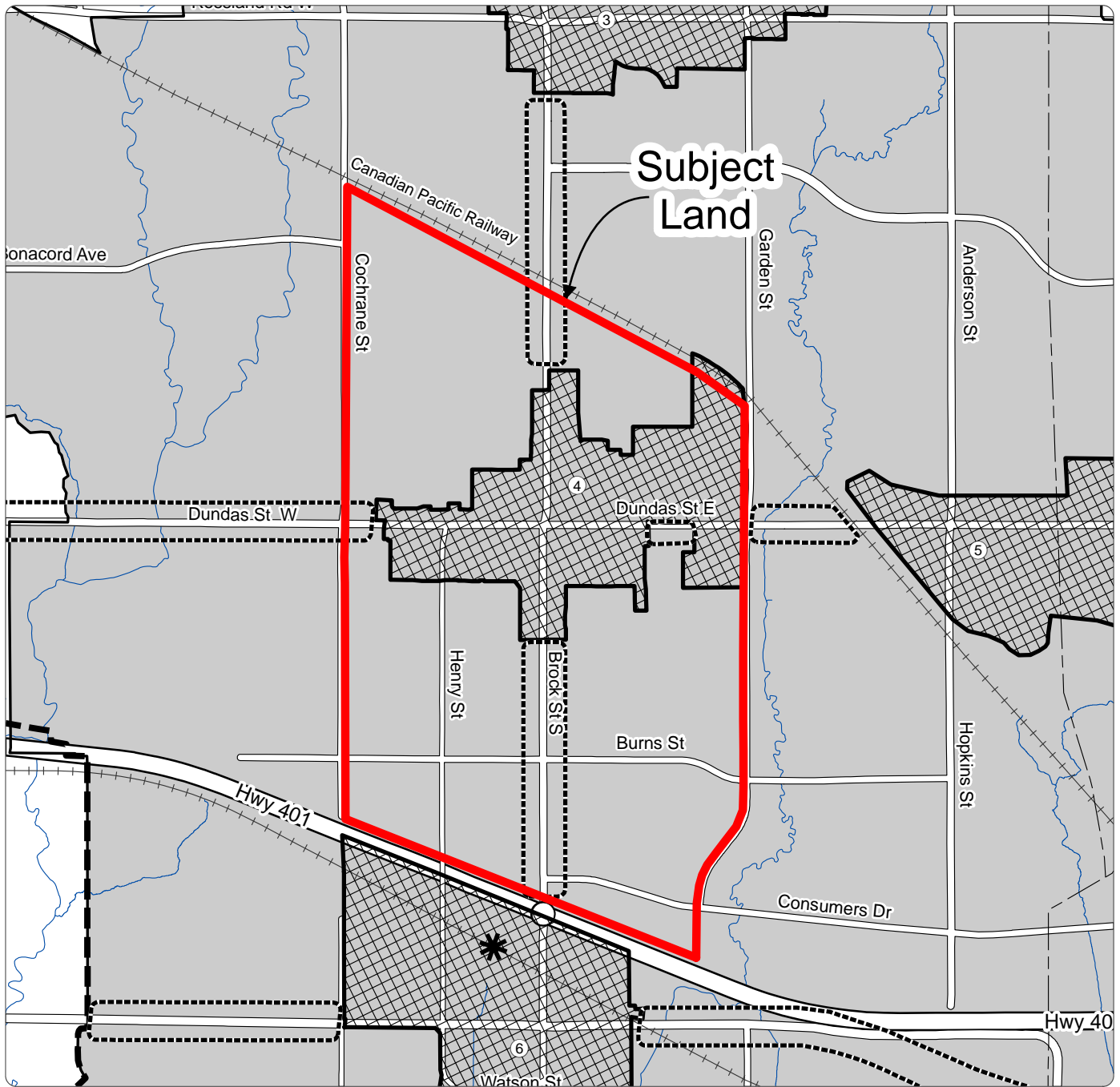


Excerpt from the Town of Whitby Official Plan Schedule 'B'



Legend

- * Major Transit Station
- 2031 Urban Area Boundary
- - - Municipal Boundary
- ▭ Built Boundary (2006)
- ▨ Intensification Area
- ⋯ Intensification Corridor
- ▧ Lands Subject to Durham Regional Official Plan Policy 14.13.7

Intensification Areas:

- ① Downtown Brooklin
- ② Brock / Taunton
- ③ Rossland / Garden
- ④ Downtown Whitby
- ⑤ Dundas East
- ⑥ Port Whitby

← D3 (Deferred by Region of Durham)

Note: Some legend items may not appear on the displayed figure extent.

Official Plan - Town of Whitby Schedule

Excerpt from Schedule 'B' Intensification

B

This schedule forms part of the Official Plan of the Town of Whitby and must be read in conjunction with the written text. For all intents and purposes, the elements within this schedule are to be considered conceptual.