



May 15, 2023
BTE Project: 20-001

Paul Bumstead, B.E.S., Senior Project Manager
Public Works, Transportation Services
Town of Whitby
3050 Garden Street, Unit 102
Whitby, ON L1R 2G6
bumsteadp@whitby.ca

**Re: Town of Whitby - Highway 7/12 Alternate Route(s) Environmental Assessment Study,
Scope Change Request No. 5 – Columbus Road Environmental Assessment Study**

Dear Mr. Bumstead:

BT Engineering Inc. (BTE) is providing this letter in response to discussions of the Technical Advisory Committee (TAC) regarding the ongoing Highway 7/12 Alternate Route(s) EA study. Based on the discussions and direction of the TAC there was support for the current EA study to be inclusive of the planning for two associated elements of the road network in the Town of Whitby. These include the planning of Columbus Road from Country Lane westerly to the boundary with the City of Pickering and a future connection to Concession Road 7 in Pickering, and the identification and property protection for an alignment for Highway 412 to continue northerly to link with Lake Ridge Road.

Background Highway 7/12 Alternate Route EA

The current Highway 7/12 Alternate Route EA has identified a Technically Preferred Alternative (TPA) for the relocation of Highway 7/12 from the current route through Brooklin. The current alignment has been designated by MTO for over 100 years and today as a Provincial highway is not conducive with the existing and planned land use expansion of the Brooklin community. The Problem and Opportunity Statement identified in the Brooklin TMP and being followed in this study includes:

“With impending significant population growth, and to support a community-focused, pedestrian-oriented, business friendly, and sustainable downtown, the longer distance through traffic, heavy-truck traffic, and some commuter traffic is no longer suited to travel through downtown Brooklin. Diversion of Provincial Highway 7/12 to a suitable alternative has the potential to alleviate congestion and improve the social environment of the downtown core. Transportation policies and infrastructure improvements are required to encourage alternative sustainable modes of travel throughout Brooklin (transit, walking, and cycling) and to accommodate the transportation infrastructure needs associated with growth identified in the Brooklin Secondary Plan Area.”

The EA follows a sequential decision-making process including community consultation. To date, three of five Community Open Houses (COHs) have occurred and there is an opportunity to introduce new elements for study using the last two planned COH's to present an expanded scope (including the Columbus Road EA). The value of completing the planning for these road/highways now is that there is an economy of scale for public

consultation and documentation as well as providing earlier certainty for developers on the land use constraints in development lands.

The recent considerations of the study have dealt with several new aspects including Council's direction to review the possible use of an urban route for the Highway relocation (Alternative F) using the Mid-block Arterial) and the province's redesignation of Highway 412 to be a toll-free highway. Based on the study review of these two issues, the conclusion is that the preferred long-term relocation of the Provincial highway should coincide with the northern extension of Highway 412 using the Lake Ridge Road corridor and not travel through the urban area of Brooklin.

Based on the focus of the EA now being on the Lake Ridge Road corridor, the land use plan needs to accommodate urban expansion to address the province's 2051 Places to Grow Plan. This will include a large urban area in Pickering (Veraine Community) and the expansion of Whitby's Brooklin community (See **Figure 1**). The Provincial highway corridor to be located between these two communities is the technical recommendation of the study.

In this area, there is a need to integrate the planning of Columbus Road and the Highway 412 extension.

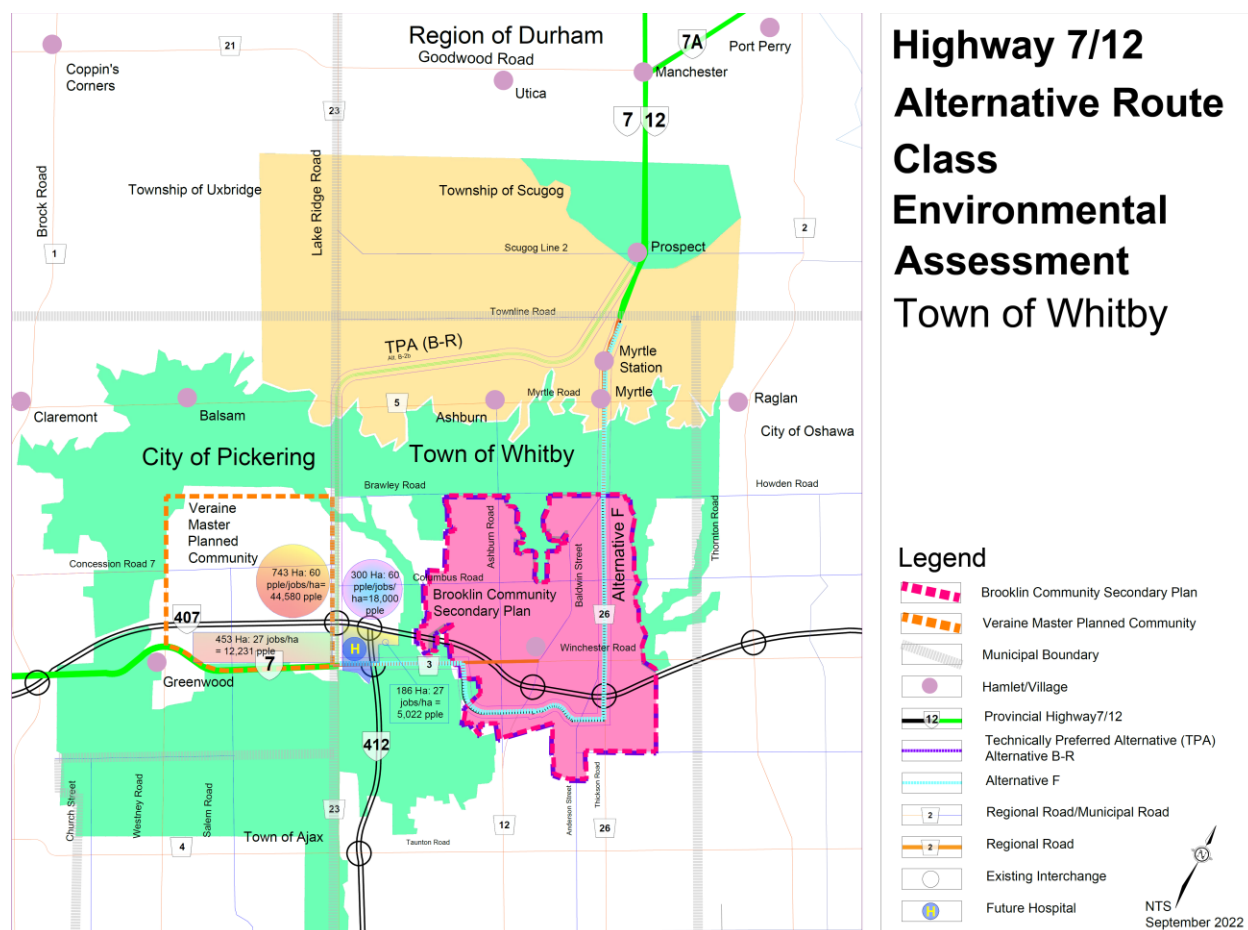


Figure 1: TPA and Future Land Use Plan (Whitby and Pickering)

Columbus Road EA

Columbus Road is planned to have a continuous link to Concession Road 7 in the City of Pickering (future Veraine community). Alternatives for this connection include realigning Columbus Road northerly to connect to Concession Road 7, realign Concession Road 7 southerly to connect to the Columbus alignment or a hybrid realigning both roads. In addition, the Town of Whitby has budgeted for a near-term EA for Columbus Road that would define the urban cross section for the road from Country Lane westerly. The scope of the Columbus Road EA overlaps with the TPA and current Study Area of the Highway 7/12 EA and will be influenced by the transition area for the Highway 412 design from a freeway to a rural highway (Highway 7/12). To date the planning and drawings for the TPA have boxed the separate study area as future work by others. This is illustrated in **Figure 2**.

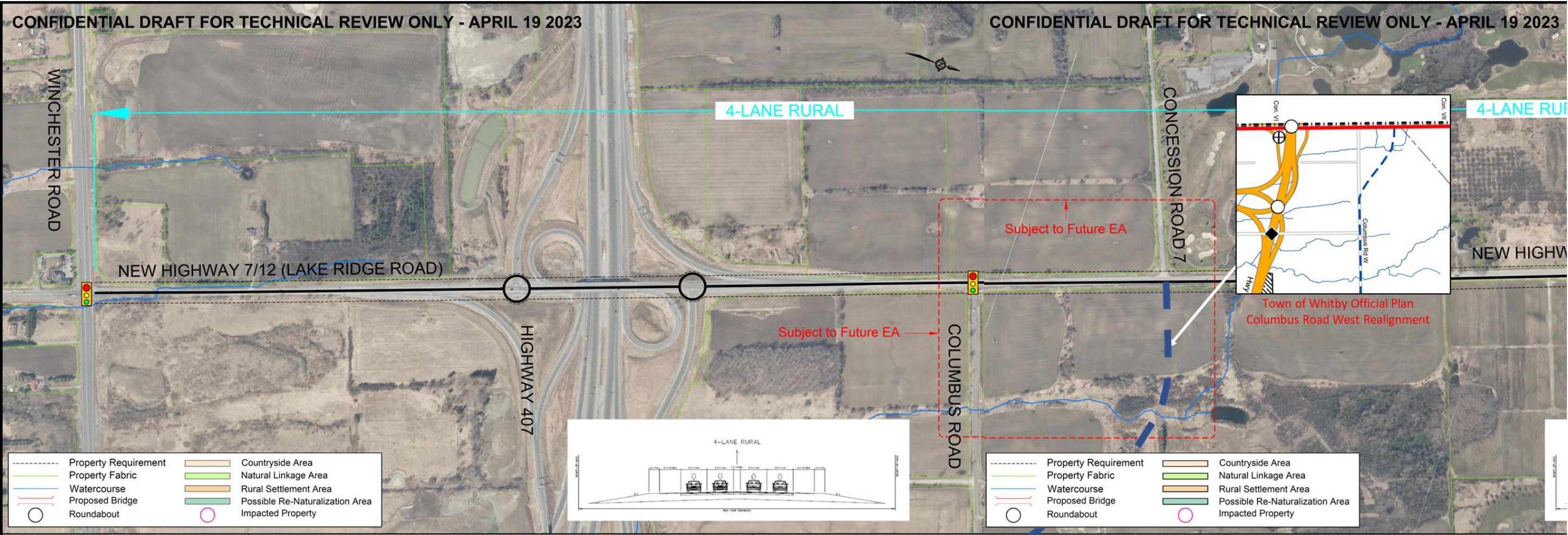


Figure 2: Technically Preferred Alternative (Red Box Labelling Columbus Road Future EA)

Highway 412 Extension

The definition of the alignment of the property protection for a future Highway 412 extension northerly to connect to Highway 7/12 is illustrated in **Figure 3** and **Figure 4**. It will be beneficial to have a defined location and right-of-way for this alignment to provide developers certainty in terms of property requirements. The transition zone from the higher speed freeway to a lower speed highway is expected to influence the location and design of the Columbus Road and Concession Road 7 connection.

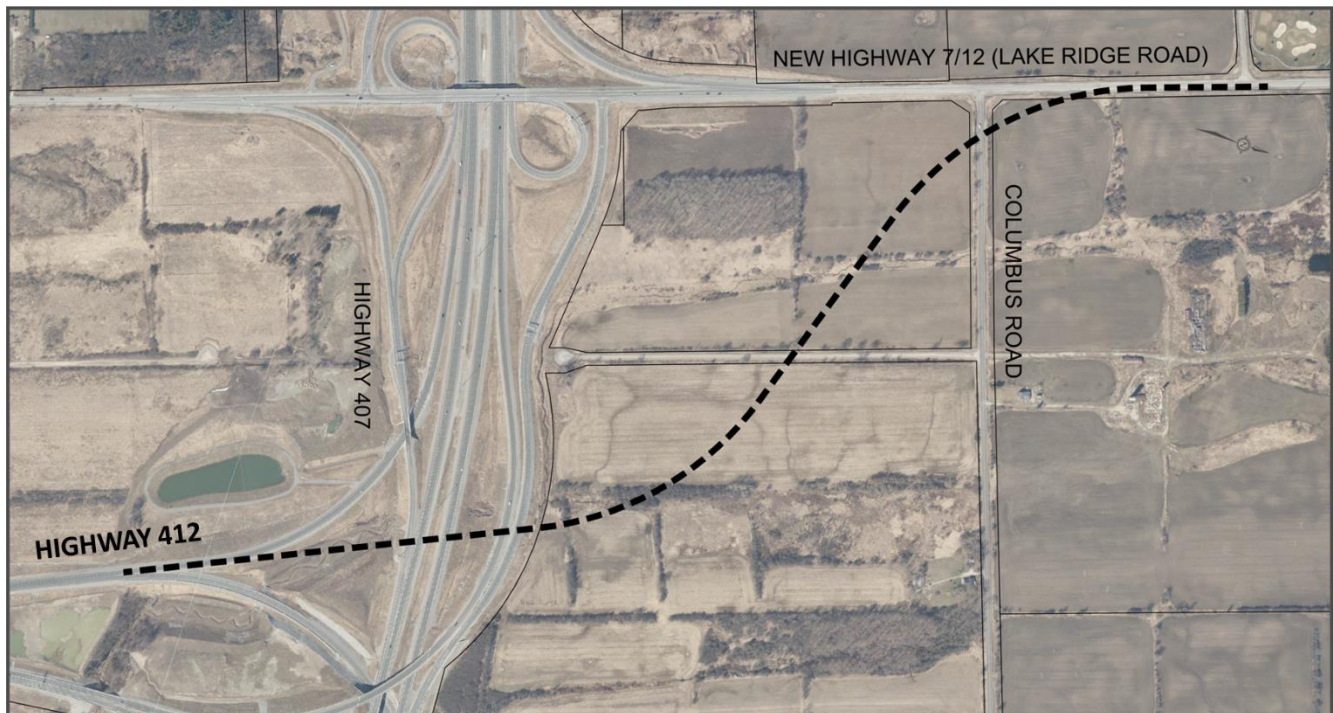


Figure 3: Possible Highway 412 Extension Northerly Conceptual Alignment

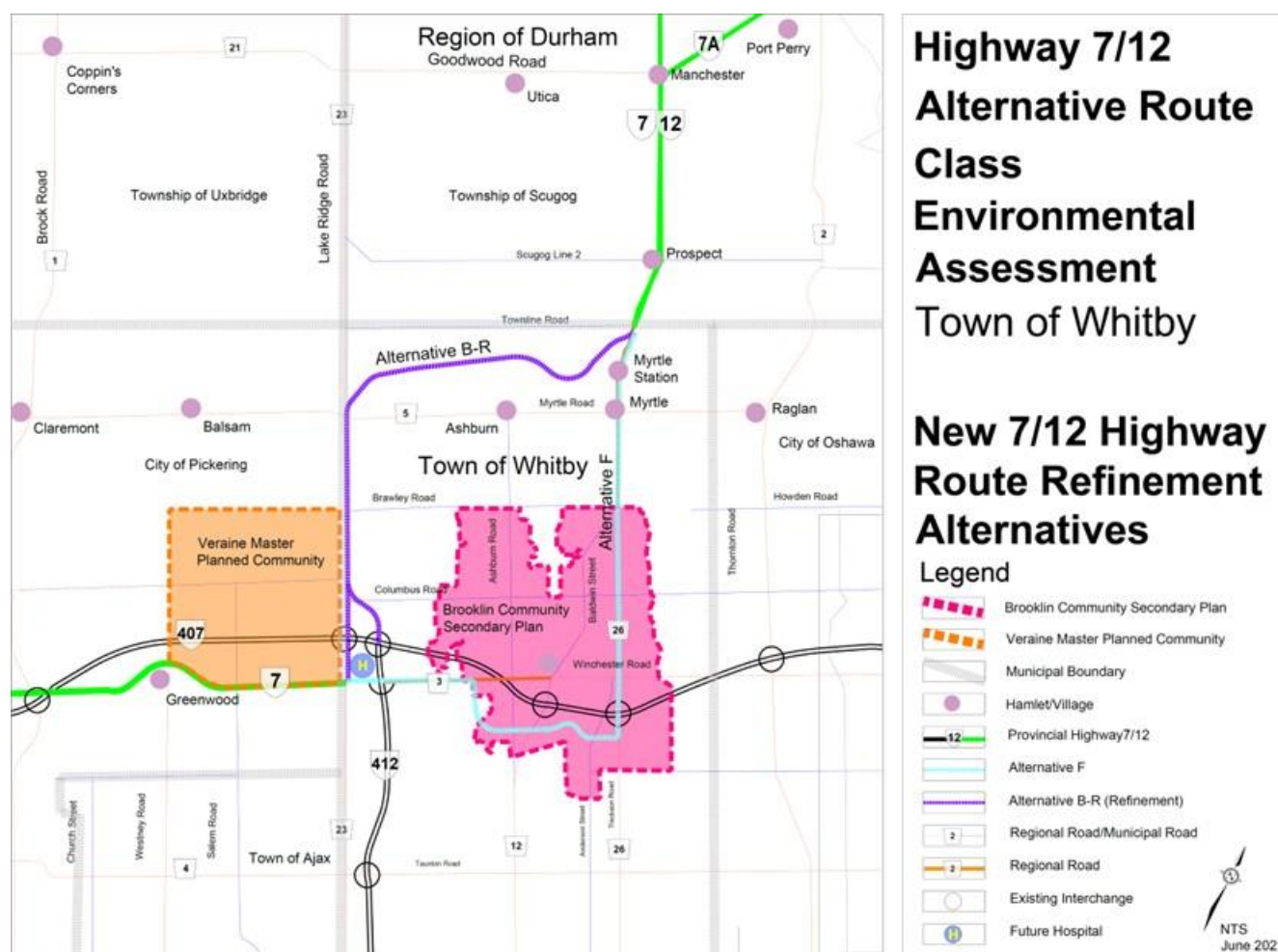


Figure 4: Technically Preferred Highway 7/12 Corridor illustrating the Northerly Extension of Highway 412

Cost Estimate

The items included in this scope change are as follows:

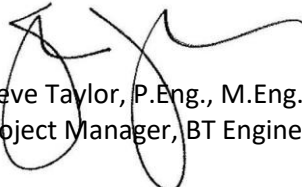
- 1) Environmental Inventories (Natural Social and Cultural Environment)
 - a. Terrestrial Environment
 - b. Fisheries Habitat
 - c. Phase 1 Archaeological Assessment
 - d. Cultural Heritage Assessment
 - e. Noise Assessment
 - f. Traffic Review
- 2) EA Process (Notices COH 4 and 5)
 - a. Notices for COH Nos. 4 and No. 5
 - b. Additional COH Nos. 4 and No. 5 exhibits related to scope
 - c. MECP Notification

- d. Mailing List
- 3) Generation of Alternatives
 - a. Cross Section Alternative
 - b. Intersection Alternatives
 - c. Alignment Alternatives
 - d. Structural Alternatives
- 4) Evaluation of Alternatives
- 5) Effects and Mitigation
- 6) Columbus Road EA
 - a. Draft Report
 - b. Final Report
- 7) Meetings
- 8) Indigenous Peoples Consultation
- 9) Project Management
- 10) Quality Control

The estimate to complete the Columbus Road EA works tasks is **\$249,647.00** excluding taxes. A proposed schedule and detailed time-task matrix are in **Attachment 1** and **Attachment 2**, respectively.

Please do not hesitate to contact us should you require any further clarification on any of the above.

Yours truly,



Steve Taylor, P.Eng., M.Eng., CVS-Life
Project Manager, BT Engineering Inc.

Attachments: 1. Proposed Schedule
2. Time-Task Matrix