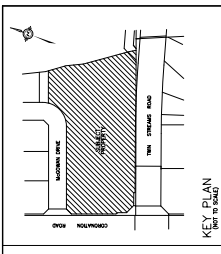
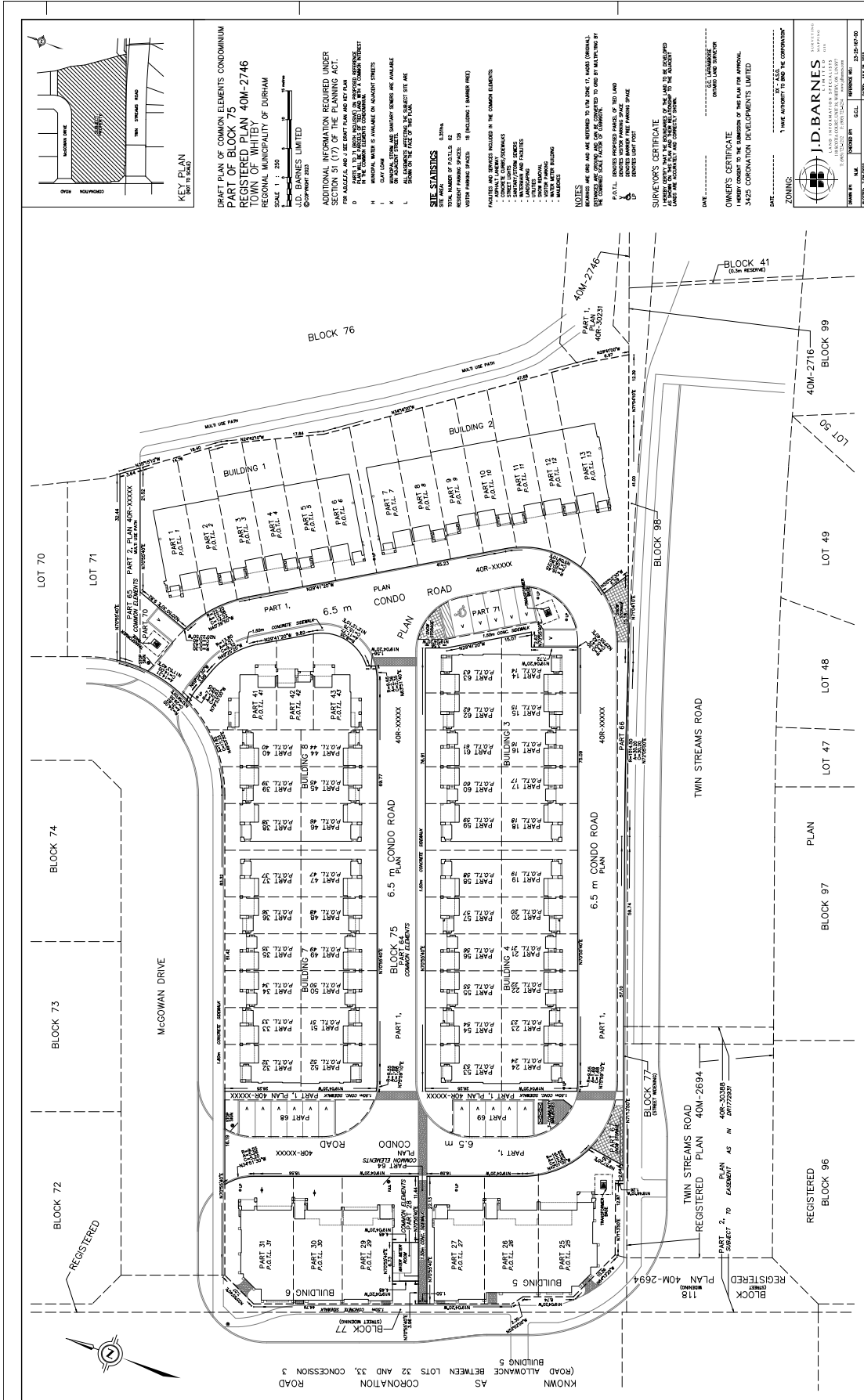


Proponent's Proposed Common Element Condominium Plan



DRAFT PLAN OF COMMON ELEMENTS CONDOMINIUM
PART OF BLOCK 75
REGISTERED PLAN 40M-2746
REGIONAL MUNICIPALITY OF DURHAM
 SCALE 1: 200
 J.D. BARNES LIMITED
 CORPORATION 2003

ADDITIONAL INFORMATION REQUIRED UNDER SECTION 51 (17) OF THE PLANNING ACT.
 FOR REGISTRATION OF THIS DRAFT PLAN AND KEY PLAN FOR THE PURPOSES OF THE PLANNING ACT:
 1. THIS DRAFT PLAN AND KEY PLAN ARE PREPARED BY THE PROONENT AND ARE NOT TO BE USED FOR ANY OTHER PURPOSE.
 2. THE DRAFT PLAN AND KEY PLAN ARE NOT TO BE USED AS EVIDENCE IN ANY COURT OF LAW.
 3. MUNICIPAL WATER IS AVAILABLE ON ADJACENT STREETS.
 4. CITY COUNCIL HAS GRANTED CONCESSION AS SHOWN ON THIS DRAFT PLAN.
 5. MUNICIPAL WATER IS AVAILABLE ON ADJACENT STREETS.
 6. THE DRAFT PLAN AND KEY PLAN ARE NOT TO BE USED AS EVIDENCE IN ANY COURT OF LAW.
 7. THE DRAFT PLAN AND KEY PLAN ARE NOT TO BE USED FOR ANY OTHER PURPOSE.

SITE STATISTICS
 TOTAL NUMBER OF PARTS: 62
 RESIDENT PARKING SPACES: 15 (INCLUDING 1 BARRIER FREE)
 VISITOR PARKING SPACES: 15 (INCLUDING 1 BARRIER FREE)

INCLUDED ARE SPACES INCLUDED IN THE COMMON ELEMENTS:
 1. COMMON ELEMENTS
 2. COMMON ELEMENTS
 3. COMMON ELEMENTS
 4. COMMON ELEMENTS
 5. COMMON ELEMENTS
 6. COMMON ELEMENTS
 7. COMMON ELEMENTS
 8. COMMON ELEMENTS
 9. COMMON ELEMENTS
 10. COMMON ELEMENTS
 11. COMMON ELEMENTS
 12. COMMON ELEMENTS
 13. COMMON ELEMENTS
 14. COMMON ELEMENTS
 15. COMMON ELEMENTS
 16. COMMON ELEMENTS
 17. COMMON ELEMENTS
 18. COMMON ELEMENTS
 19. COMMON ELEMENTS
 20. COMMON ELEMENTS
 21. COMMON ELEMENTS
 22. COMMON ELEMENTS
 23. COMMON ELEMENTS
 24. COMMON ELEMENTS
 25. COMMON ELEMENTS
 26. COMMON ELEMENTS
 27. COMMON ELEMENTS
 28. COMMON ELEMENTS
 29. COMMON ELEMENTS
 30. COMMON ELEMENTS
 31. COMMON ELEMENTS
 32. COMMON ELEMENTS
 33. COMMON ELEMENTS
 34. COMMON ELEMENTS
 35. COMMON ELEMENTS
 36. COMMON ELEMENTS
 37. COMMON ELEMENTS
 38. COMMON ELEMENTS
 39. COMMON ELEMENTS
 40. COMMON ELEMENTS
 41. COMMON ELEMENTS
 42. COMMON ELEMENTS
 43. COMMON ELEMENTS
 44. COMMON ELEMENTS
 45. COMMON ELEMENTS
 46. COMMON ELEMENTS
 47. COMMON ELEMENTS
 48. COMMON ELEMENTS
 49. COMMON ELEMENTS
 50. COMMON ELEMENTS
 51. COMMON ELEMENTS
 52. COMMON ELEMENTS
 53. COMMON ELEMENTS
 54. COMMON ELEMENTS
 55. COMMON ELEMENTS
 56. COMMON ELEMENTS
 57. COMMON ELEMENTS
 58. COMMON ELEMENTS
 59. COMMON ELEMENTS
 60. COMMON ELEMENTS
 61. COMMON ELEMENTS
 62. COMMON ELEMENTS

NOTES:
 1. PARTS 1 AND 2 ARE REFERRED TO THE DRAFT PLAN AND KEY PLAN.
 2. PARTS 3 AND 4 ARE REFERRED TO THE DRAFT PLAN AND KEY PLAN.
 3. PARTS 5 AND 6 ARE REFERRED TO THE DRAFT PLAN AND KEY PLAN.
 4. PARTS 7 AND 8 ARE REFERRED TO THE DRAFT PLAN AND KEY PLAN.
 5. PARTS 9 AND 10 ARE REFERRED TO THE DRAFT PLAN AND KEY PLAN.
 6. PARTS 11 AND 12 ARE REFERRED TO THE DRAFT PLAN AND KEY PLAN.
 7. PARTS 13 AND 14 ARE REFERRED TO THE DRAFT PLAN AND KEY PLAN.
 8. PARTS 15 AND 16 ARE REFERRED TO THE DRAFT PLAN AND KEY PLAN.
 9. PARTS 17 AND 18 ARE REFERRED TO THE DRAFT PLAN AND KEY PLAN.
 10. PARTS 19 AND 20 ARE REFERRED TO THE DRAFT PLAN AND KEY PLAN.
 11. PARTS 21 AND 22 ARE REFERRED TO THE DRAFT PLAN AND KEY PLAN.
 12. PARTS 23 AND 24 ARE REFERRED TO THE DRAFT PLAN AND KEY PLAN.
 13. PARTS 25 AND 26 ARE REFERRED TO THE DRAFT PLAN AND KEY PLAN.
 14. PARTS 27 AND 28 ARE REFERRED TO THE DRAFT PLAN AND KEY PLAN.
 15. PARTS 29 AND 30 ARE REFERRED TO THE DRAFT PLAN AND KEY PLAN.
 16. PARTS 31 AND 32 ARE REFERRED TO THE DRAFT PLAN AND KEY PLAN.
 17. PARTS 33 AND 34 ARE REFERRED TO THE DRAFT PLAN AND KEY PLAN.
 18. PARTS 35 AND 36 ARE REFERRED TO THE DRAFT PLAN AND KEY PLAN.
 19. PARTS 37 AND 38 ARE REFERRED TO THE DRAFT PLAN AND KEY PLAN.
 20. PARTS 39 AND 40 ARE REFERRED TO THE DRAFT PLAN AND KEY PLAN.
 21. PARTS 41 AND 42 ARE REFERRED TO THE DRAFT PLAN AND KEY PLAN.
 22. PARTS 43 AND 44 ARE REFERRED TO THE DRAFT PLAN AND KEY PLAN.
 23. PARTS 45 AND 46 ARE REFERRED TO THE DRAFT PLAN AND KEY PLAN.
 24. PARTS 47 AND 48 ARE REFERRED TO THE DRAFT PLAN AND KEY PLAN.
 25. PARTS 49 AND 50 ARE REFERRED TO THE DRAFT PLAN AND KEY PLAN.
 26. PARTS 51 AND 52 ARE REFERRED TO THE DRAFT PLAN AND KEY PLAN.
 27. PARTS 53 AND 54 ARE REFERRED TO THE DRAFT PLAN AND KEY PLAN.
 28. PARTS 55 AND 56 ARE REFERRED TO THE DRAFT PLAN AND KEY PLAN.
 29. PARTS 57 AND 58 ARE REFERRED TO THE DRAFT PLAN AND KEY PLAN.
 30. PARTS 59 AND 60 ARE REFERRED TO THE DRAFT PLAN AND KEY PLAN.
 31. PARTS 61 AND 62 ARE REFERRED TO THE DRAFT PLAN AND KEY PLAN.

SURVEYOR'S CERTIFICATE
 I HEREBY CERTIFY THAT THE DIMENSIONS OF THE LAND AS BEING DEPICTED ON THIS DRAFT PLAN AND KEY PLAN WERE MEASURED AND FOUND TO BE CORRECT AND ACCURATE TO THE BEST OF MY KNOWLEDGE AND BELIEF.
 DATE: _____
 SURVEYOR: _____

OWNER'S CERTIFICATE
 I HEREBY CONSENT TO THE SUBMISSION OF THIS PLAN FOR APPROVAL.
 3422 CORPORATION DEVELOPMENTS LIMITED
 DATE: _____

ZONING: _____
 I HAVE AUTHORITY TO SIGN THIS PLAN FOR APPROVAL.
 DATE: _____

J.D. BARNES LIMITED
 1000 SHEPPARD AVENUE EAST, SUITE 200
 SCARBOROUGH, ONTARIO M1S 1W5
 TEL: (416) 291-1234
 FAX: (416) 291-1235
 www.jdbarnes.com