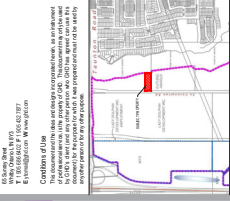
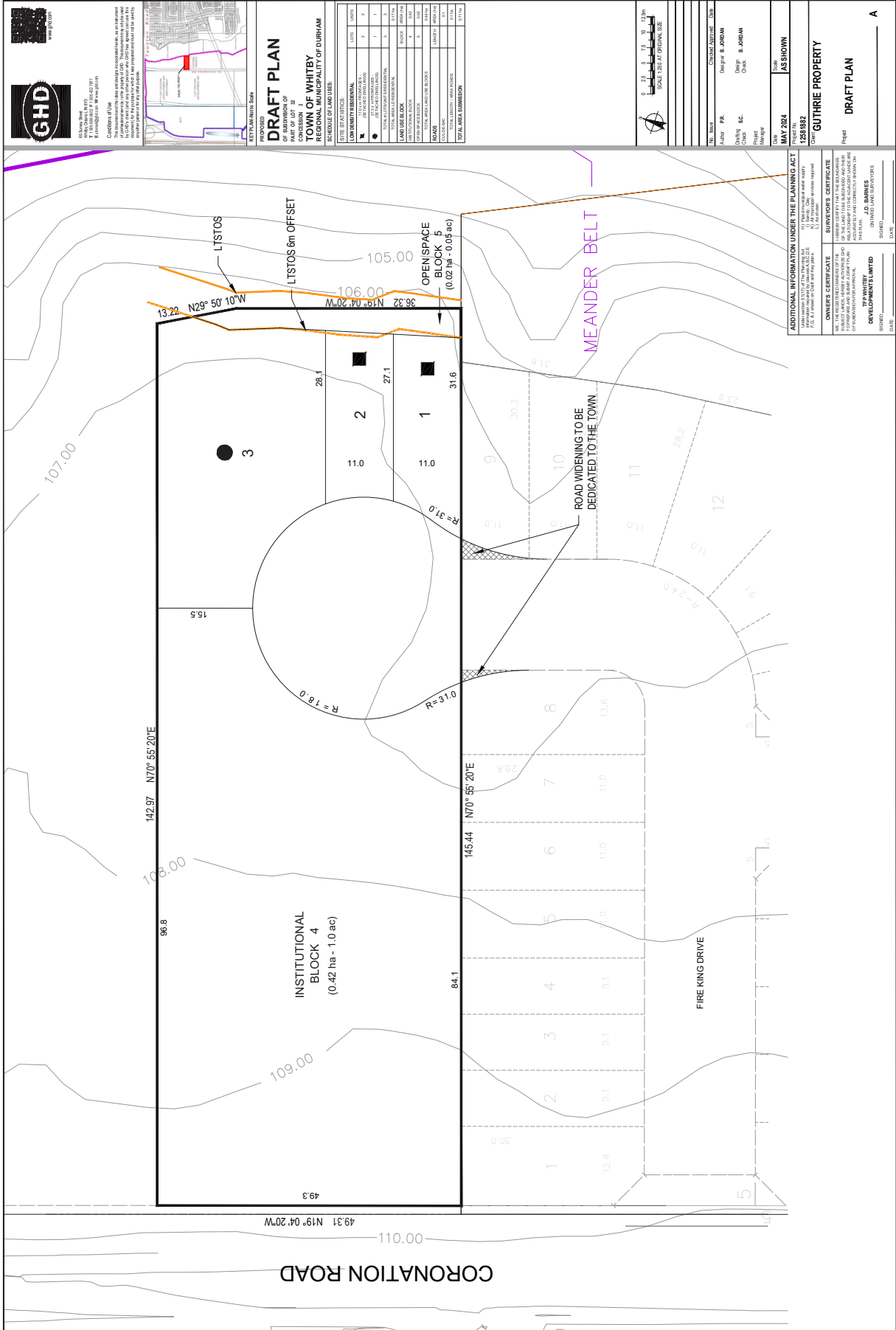


# Attachment #3 Proponent's Proposed Draft Plan



**SCHEDULE OF LAND USES**

TYPE OF LOT	LOT	LAND USE
LOW DENSITY RESIDENTIAL	1	RESIDENTIAL
LOW DENSITY RESIDENTIAL	2	RESIDENTIAL
LOW DENSITY RESIDENTIAL	3	RESIDENTIAL
LOW DENSITY RESIDENTIAL	4	RESIDENTIAL
LOW DENSITY RESIDENTIAL	5	RESIDENTIAL
LOW DENSITY RESIDENTIAL	6	RESIDENTIAL
LOW DENSITY RESIDENTIAL	7	RESIDENTIAL
LOW DENSITY RESIDENTIAL	8	RESIDENTIAL
LOW DENSITY RESIDENTIAL	9	RESIDENTIAL
LOW DENSITY RESIDENTIAL	10	RESIDENTIAL
LOW DENSITY RESIDENTIAL	11	RESIDENTIAL
LOW DENSITY RESIDENTIAL	12	RESIDENTIAL

**DATE: MAY 2024**  
**AS SHOWN**

**12881882**

**GUTHRIE PROPERTY**  
**DRAFT PLAN**

**OWNER'S CERTIFICATE**  
 I HEREBY CERTIFY THAT THE INFORMATION CONTAINED IN THIS DRAFT PLAN IS TRUE AND CORRECT TO THE BEST OF MY KNOWLEDGE AND BELIEF.

**DEVELOPER'S LIMITED**  
 GUTHRIE PROPERTY DEVELOPMENTS LIMITED

SIGNED: \_\_\_\_\_ DATE: \_\_\_\_\_

**ADDITIONAL INFORMATION UNDER THE PLANNING ACT**

1. The purpose of this plan is to provide for the development and use of the land shown on this plan in accordance with the provisions of the Planning Act and the Durham Region Official Plan.

2. The land shown on this plan is zoned as follows:

3. The land shown on this plan is subject to the following conditions:

4. The land shown on this plan is subject to the following restrictions:

5. The land shown on this plan is subject to the following requirements:

6. The land shown on this plan is subject to the following standards:

7. The land shown on this plan is subject to the following guidelines:

8. The land shown on this plan is subject to the following objectives:

9. The land shown on this plan is subject to the following policies:

10. The land shown on this plan is subject to the following strategies:

11. The land shown on this plan is subject to the following initiatives:

12. The land shown on this plan is subject to the following programs:

13. The land shown on this plan is subject to the following services:

14. The land shown on this plan is subject to the following facilities:

15. The land shown on this plan is subject to the following infrastructure:

16. The land shown on this plan is subject to the following utilities:

17. The land shown on this plan is subject to the following transportation:

18. The land shown on this plan is subject to the following recreation:

19. The land shown on this plan is subject to the following culture:

20. The land shown on this plan is subject to the following heritage:

21. The land shown on this plan is subject to the following environment:

22. The land shown on this plan is subject to the following climate:

23. The land shown on this plan is subject to the following energy:

24. The land shown on this plan is subject to the following water:

25. The land shown on this plan is subject to the following waste:

26. The land shown on this plan is subject to the following air:

27. The land shown on this plan is subject to the following noise:

28. The land shown on this plan is subject to the following vibration:

29. The land shown on this plan is subject to the following electromagnetic interference:

30. The land shown on this plan is subject to the following radio frequency interference:

31. The land shown on this plan is subject to the following radio frequency exposure:

32. The land shown on this plan is subject to the following radio frequency safety:

33. The land shown on this plan is subject to the following radio frequency health:

34. The land shown on this plan is subject to the following radio frequency environment:

35. The land shown on this plan is subject to the following radio frequency infrastructure:

36. The land shown on this plan is subject to the following radio frequency services:

37. The land shown on this plan is subject to the following radio frequency facilities:

38. The land shown on this plan is subject to the following radio frequency infrastructure:

39. The land shown on this plan is subject to the following radio frequency utilities:

40. The land shown on this plan is subject to the following radio frequency transportation:

41. The land shown on this plan is subject to the following radio frequency recreation:

42. The land shown on this plan is subject to the following radio frequency culture:

43. The land shown on this plan is subject to the following radio frequency heritage:

44. The land shown on this plan is subject to the following radio frequency environment:

45. The land shown on this plan is subject to the following radio frequency climate:

46. The land shown on this plan is subject to the following radio frequency energy:

47. The land shown on this plan is subject to the following radio frequency water:

48. The land shown on this plan is subject to the following radio frequency waste:

49. The land shown on this plan is subject to the following radio frequency air:

50. The land shown on this plan is subject to the following radio frequency noise:

51. The land shown on this plan is subject to the following radio frequency vibration:

52. The land shown on this plan is subject to the following radio frequency electromagnetic interference:

53. The land shown on this plan is subject to the following radio frequency radio frequency interference:

54. The land shown on this plan is subject to the following radio frequency radio frequency exposure:

55. The land shown on this plan is subject to the following radio frequency radio frequency safety:

56. The land shown on this plan is subject to the following radio frequency radio frequency health:

57. The land shown on this plan is subject to the following radio frequency radio frequency environment:

58. The land shown on this plan is subject to the following radio frequency radio frequency infrastructure:

59. The land shown on this plan is subject to the following radio frequency radio frequency services:

60. The land shown on this plan is subject to the following radio frequency radio frequency facilities:

61. The land shown on this plan is subject to the following radio frequency radio frequency infrastructure:

62. The land shown on this plan is subject to the following radio frequency radio frequency utilities:

63. The land shown on this plan is subject to the following radio frequency radio frequency transportation:

64. The land shown on this plan is subject to the following radio frequency radio frequency recreation:

65. The land shown on this plan is subject to the following radio frequency radio frequency culture:

66. The land shown on this plan is subject to the following radio frequency radio frequency heritage:

67. The land shown on this plan is subject to the following radio frequency radio frequency environment:

68. The land shown on this plan is subject to the following radio frequency radio frequency climate:

69. The land shown on this plan is subject to the following radio frequency radio frequency energy:

70. The land shown on this plan is subject to the following radio frequency radio frequency water:

71. The land shown on this plan is subject to the following radio frequency radio frequency waste:

72. The land shown on this plan is subject to the following radio frequency radio frequency air:

73. The land shown on this plan is subject to the following radio frequency radio frequency noise:

74. The land shown on this plan is subject to the following radio frequency radio frequency vibration:

75. The land shown on this plan is subject to the following radio frequency radio frequency electromagnetic interference:

76. The land shown on this plan is subject to the following radio frequency radio frequency radio frequency interference:

77. The land shown on this plan is subject to the following radio frequency radio frequency radio frequency exposure:

78. The land shown on this plan is subject to the following radio frequency radio frequency radio frequency safety:

79. The land shown on this plan is subject to the following radio frequency radio frequency radio frequency health:

80. The land shown on this plan is subject to the following radio frequency radio frequency radio frequency environment:

81. The land shown on this plan is subject to the following radio frequency radio frequency radio frequency infrastructure:

82. The land shown on this plan is subject to the following radio frequency radio frequency radio frequency services:

83. The land shown on this plan is subject to the following radio frequency radio frequency radio frequency facilities:

84. The land shown on this plan is subject to the following radio frequency radio frequency radio frequency infrastructure:

85. The land shown on this plan is subject to the following radio frequency radio frequency radio frequency utilities:

86. The land shown on this plan is subject to the following radio frequency radio frequency radio frequency transportation:

87. The land shown on this plan is subject to the following radio frequency radio frequency radio frequency recreation:

88. The land shown on this plan is subject to the following radio frequency radio frequency radio frequency culture:

89. The land shown on this plan is subject to the following radio frequency radio frequency radio frequency heritage:

90. The land shown on this plan is subject to the following radio frequency radio frequency radio frequency environment:

91. The land shown on this plan is subject to the following radio frequency radio frequency radio frequency climate:

92. The land shown on this plan is subject to the following radio frequency radio frequency radio frequency energy:

93. The land shown on this plan is subject to the following radio frequency radio frequency radio frequency water:

94. The land shown on this plan is subject to the following radio frequency radio frequency radio frequency waste:

95. The land shown on this plan is subject to the following radio frequency radio frequency radio frequency air:

96. The land shown on this plan is subject to the following radio frequency radio frequency radio frequency noise:

97. The land shown on this plan is subject to the following radio frequency radio frequency radio frequency vibration:

98. The land shown on this plan is subject to the following radio frequency radio frequency radio frequency electromagnetic interference:

99. The land shown on this plan is subject to the following radio frequency radio frequency radio frequency radio frequency interference:

100. The land shown on this plan is subject to the following radio frequency radio frequency radio frequency radio frequency exposure:

**DATE: MAY 2024**  
**AS SHOWN**

**12881882**

**GUTHRIE PROPERTY**  
**DRAFT PLAN**

**OWNER'S CERTIFICATE**  
 I HEREBY CERTIFY THAT THE INFORMATION CONTAINED IN THIS DRAFT PLAN IS TRUE AND CORRECT TO THE BEST OF MY KNOWLEDGE AND BELIEF.

**DEVELOPER'S LIMITED**  
 GUTHRIE PROPERTY DEVELOPMENTS LIMITED

SIGNED: \_\_\_\_\_ DATE: \_\_\_\_\_