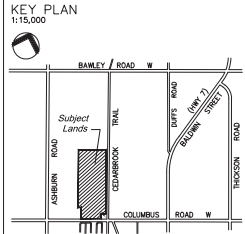
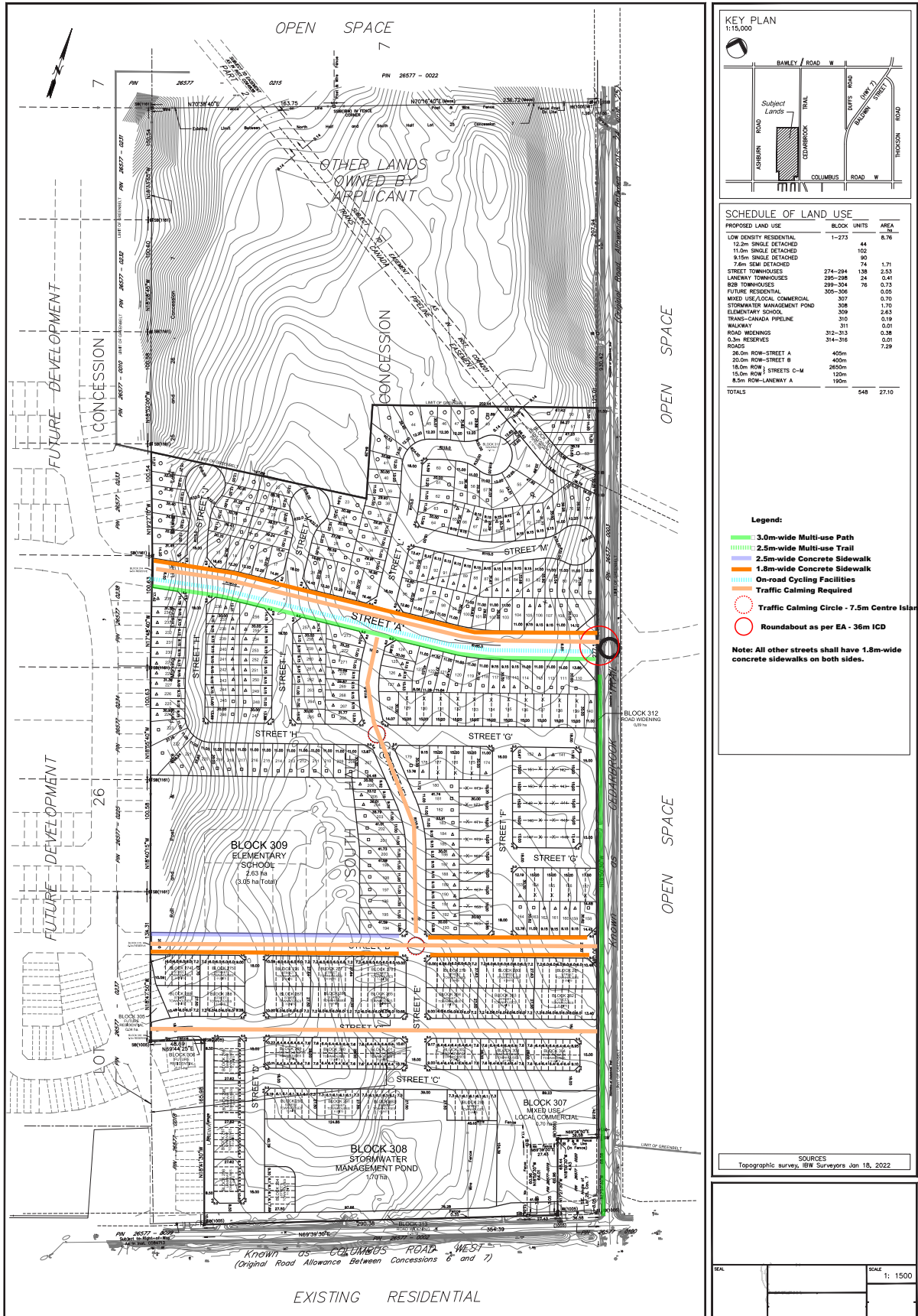


## Preliminary Composite Transportation Component Plan



**SCHEDULE OF LAND USE**

PROPOSED LAND USE	BLOCK UNITS	AREA
LOW DENSITY RESIDENTIAL	1-273	44
12.2m SINGLE DETACHED		8.76
11.0m SINGLE DETACHED		102
8.1m SINGLE DETACHED		90
7.6m SEMI DETACHED		74
STREET TOWNHOUSES	274-294	136
LANEWAY TOWNHOUSES	295-298	24
808 TOWNHOUSES	299-304	76
FUTURE RESIDENTIAL	305-306	0.25
MIXED USE LOCAL COMMERCIAL	307	0.70
STORMWATER MANAGEMENT POND		1.77
ELEMENTARY SCHOOL	309	2.63
TRANS-CANADA PIPELINE	310	0.19
WALKWAY	311	0.01
ROAD WIDENINGS	312-313	0.38
0.3m RESERVES	314-316	0.21
ROADS		7.29
36.0m ROW-STREET A		405m
20.0m ROW-STREET B		400m
18.0m ROW		2600m
15.0m ROW STREETS C-M		120m
8.5m ROW-LANEWAY A		190m
<b>TOTALS</b>	<b>548</b>	<b>27.10</b>

- Legend:**
- 3.0m-wide Multi-use Path
  - 2.5m-wide Multi-use Trail
  - 1.8m-wide Concrete Sidewalk
  - On-road Cycling Facilities
  - Traffic Calming Required
  - Roundabout as per EA - 36m ICD
- Note:** All other streets shall have 1.8m-wide concrete sidewalks on both sides.

**SOURCES**  
Topographic survey, IBW Surveyors Jan 18, 2022

**SCALE**  
1: 1500