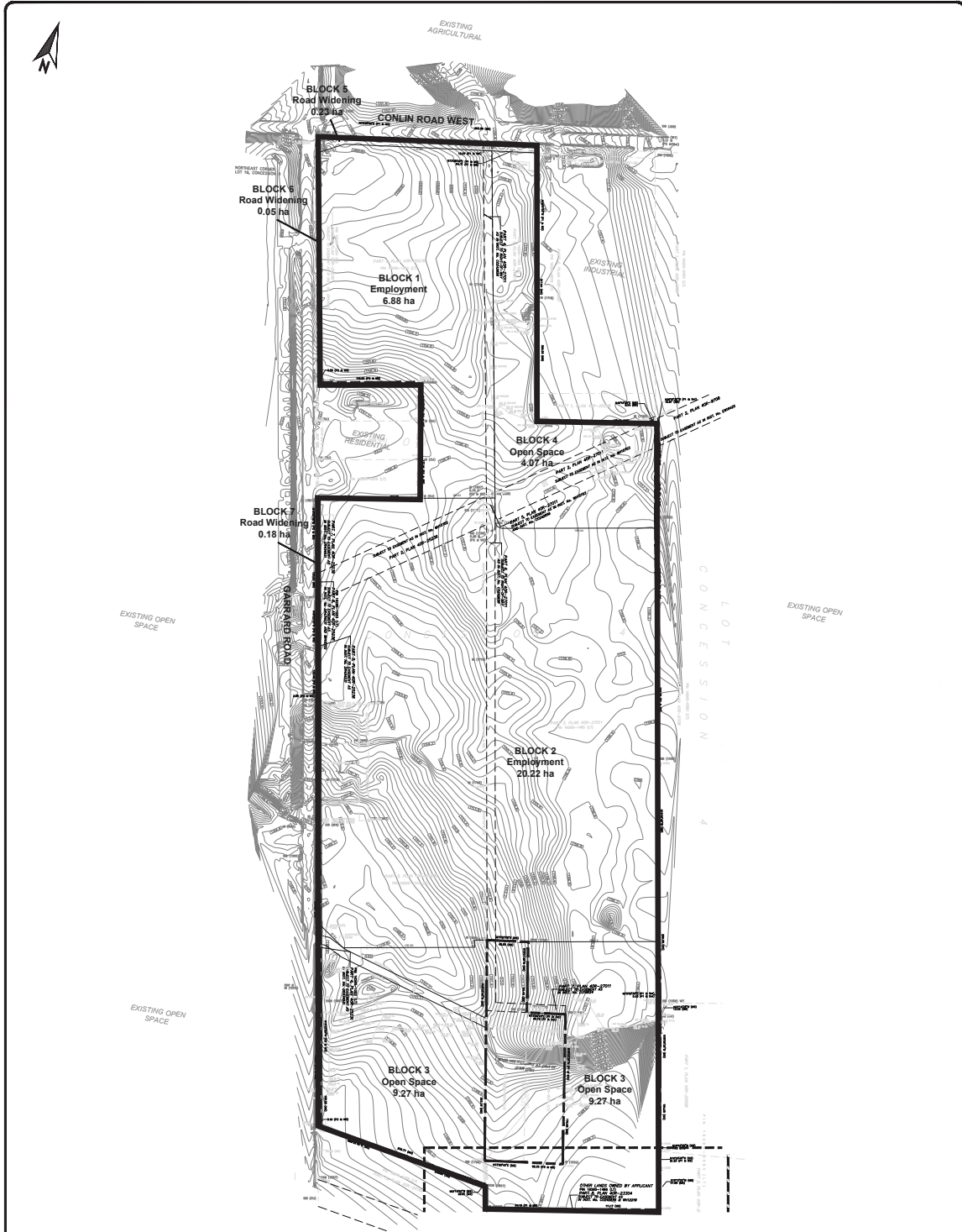


Attachment #3

PDP 61-24

Proponent's Proposed Draft Plan of Subdivision



Schedule of Land Use		
Description	Lot / Block No.	Area (ha)
Employment	1, 2	27.10
Open Space	3, 4	13.32
Road Widening	5-7	0.46
Private Access Road	8	1.51
Total Site Area		42.39

APPROVAL STAMP:

TITLE:	
DRAFT PLAN OF SUBDIVISION	
LEGAL DESCRIPTION:	
DRAFT PLAN OF SUBDIVISION PART OF LOT 18 CONCESSION 4 GEOGRAPHIC TOWNSHIP OF WHITBY TOWN OF WHITBY REGIONAL MUNICIPALITY OF DURHAM	
ANATOLIA	
KEY PLAN:	
SURVEYOR'S CERTIFICATE:	
I HEREBY CERTIFY THAT THE BOUNDARIES OF THE LANDS TO BE SUBDIVIDED AS SHOWN ON THIS PLAN AND THEIR RELATIONSHIP TO THE ADJACENT LANDS ARE CORRECTLY SHOWN IN ACCORDANCE WITH A PLAN OF SURVEY PREPARED BY PHILIP A. BOGARD.	
DATE: 2024-09-23	
OWNER'S CERTIFICATE:	
I HEREBY AUTHORIZE THE SURVEYOR GROUP LTD. TO PREPARE AND SUBMIT THIS DRAFT PLAN OF SUBDIVISION TO THE TOWN OF WHITBY.	
DATE:	

REQUIRED INFORMATION:	
AS REQUIRED UNDER SECTION 61(1) OF THE PLANNING ACT R.S.O. 1990:	
(X) SEE PLAN	(X) SEE PLAN
() SEE MAP	() SEE PLAN - SERVICES AVAILABLE
() SEE PLAN - SERVICES AVAILABLE	() SEE PLAN - SERVICES AVAILABLE
() SEE PLAN	() SEE PLAN
() SEE PLAN	() SEE PLAN
REVISIONS:	
NO.	Description

PROJECT NO. 22048
DATE August 11, 2024
DRAWN BY EC
CHECKED BY MP
DRAWING NO. DP-01
BIGLIERI GROUP
212 Argonaut Drive, Toronto 21 King Street W., Suite 1010, Hamilton ON L9A 1K3 www.biglierigroup.com