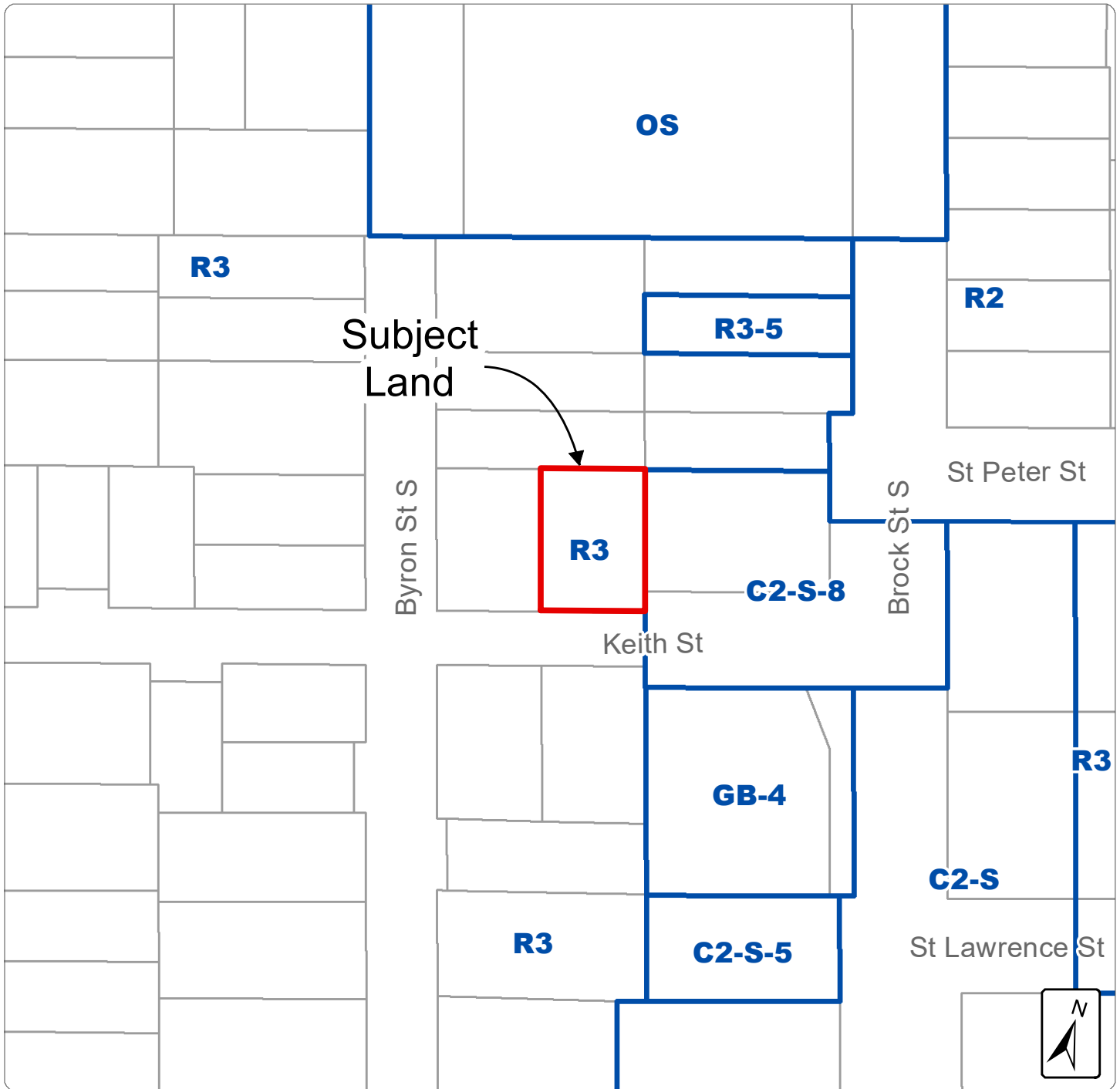


Attachment #6
Excerpt from Zoning By-Law 2585



 **Town of Whitby Planning and Development Department**

Address:
114 Kieth Street

Date:
December 2024

External Data Sources:
2023 Orthophotography provided by © First Base Solutions Inc.; Parcel Fabric: © Teranet Enterprises Inc. and its suppliers. All rights reserved. Not a Plan of Survey.

The Town of Whitby assumes no responsibility for any errors, and is not liable for any damages of any kind resulting from the use of, or reliance on, the information contained in this document. The Town of Whitby does not make any representations or warranty, express or implied, concerning the accuracy, quality, likely results or reliability of the use of the information contained in this document.