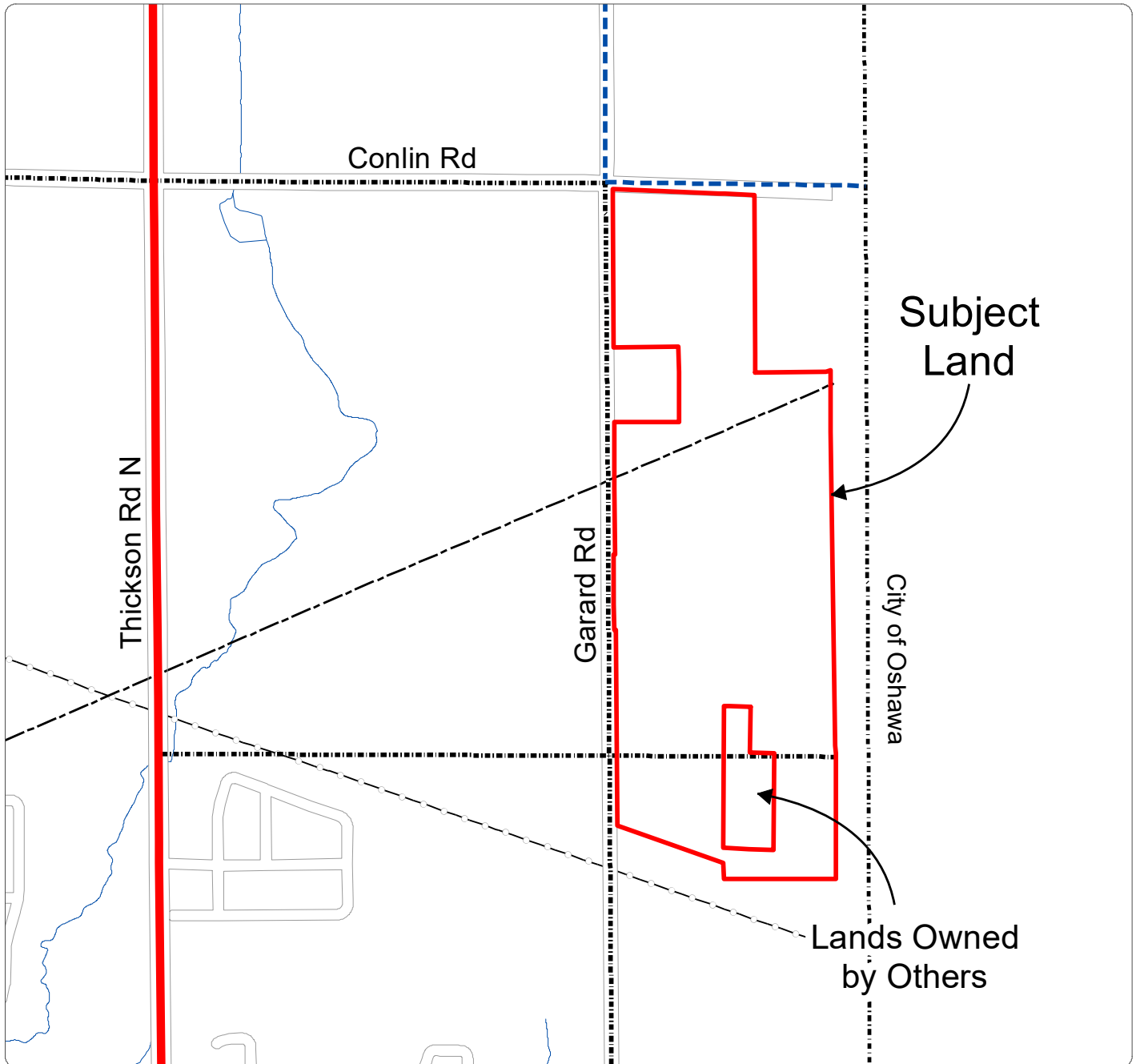


Excerpt from the Town of Whitby Official Plan Schedule 'D'



Legend

- Existing Interchange
- Proposed Interchange
- ◆ Proposed Grade Separation
- Hydro Corridor
- Municipal Boundary
- Pipeline Corridor
- Railway Corridor
- Deferred by the Region of Durham

Transit:

- ⊕ Future Transitway Station
- * Major Transit Station
- Commuter Rail
- Future Commuter Rail
- ▬ Transit Spine

Road Network:

- 7 Provincial Highway
- 4 Regional Road
- Controlled Access Highway (Freeway)
- Type A Arterial Road
- Type B Arterial Road
- Type C Arterial Road
- Collector Road
- Local Road
- Unopened Road Allowance

Lands Subject to Durham Regional — D3 (Deferred by Region of Durham)

Special Policy Area Refer to section 11.5.31.6

Note: Refer to Section 8.1.3.1.6 regarding alternative route to Baldwin Street for goods and people movement.

Note: Some legend items may not appear on the displayed figure extent.

Official Plan - Town of Whitby Schedule

Excerpt from Schedule 'D' Transportation

D

Whitby

0 150 300 Metres

This schedule forms part of the Official Plan of the Town of Whitby and must be read in conjunction with the written text. For all intents and purposes, the elements within this schedule are to be considered conceptual.