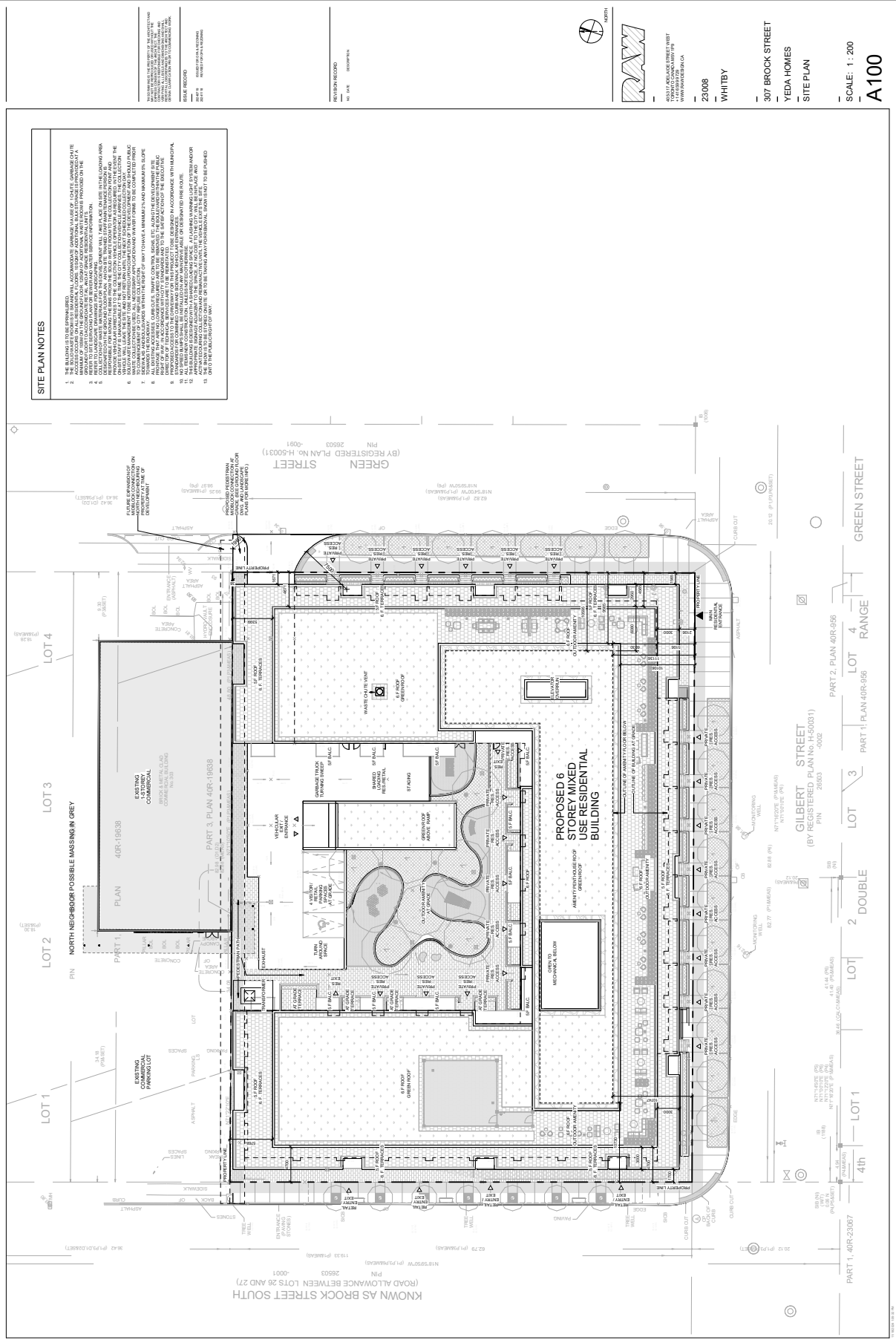


Attachment #3 Proponent's Proposed Concept Plan



- SITE PLAN NOTES**
1. THE SITE PLAN IS A CONCEPTUAL PLAN. THE PROPOSED DEVELOPMENT IS SUBJECT TO THE REVIEW AND APPROVAL OF THE CITY OF GILBERT AND THE ARIZONA DEPARTMENT OF TRANSPORTATION AND CONSTRUCTION.
 2. THE PROPOSED DEVELOPMENT IS SUBJECT TO THE REVIEW AND APPROVAL OF THE CITY OF GILBERT AND THE ARIZONA DEPARTMENT OF TRANSPORTATION AND CONSTRUCTION.
 3. THE PROPOSED DEVELOPMENT IS SUBJECT TO THE REVIEW AND APPROVAL OF THE CITY OF GILBERT AND THE ARIZONA DEPARTMENT OF TRANSPORTATION AND CONSTRUCTION.
 4. THE PROPOSED DEVELOPMENT IS SUBJECT TO THE REVIEW AND APPROVAL OF THE CITY OF GILBERT AND THE ARIZONA DEPARTMENT OF TRANSPORTATION AND CONSTRUCTION.
 5. THE PROPOSED DEVELOPMENT IS SUBJECT TO THE REVIEW AND APPROVAL OF THE CITY OF GILBERT AND THE ARIZONA DEPARTMENT OF TRANSPORTATION AND CONSTRUCTION.
 6. THE PROPOSED DEVELOPMENT IS SUBJECT TO THE REVIEW AND APPROVAL OF THE CITY OF GILBERT AND THE ARIZONA DEPARTMENT OF TRANSPORTATION AND CONSTRUCTION.
 7. THE PROPOSED DEVELOPMENT IS SUBJECT TO THE REVIEW AND APPROVAL OF THE CITY OF GILBERT AND THE ARIZONA DEPARTMENT OF TRANSPORTATION AND CONSTRUCTION.
 8. THE PROPOSED DEVELOPMENT IS SUBJECT TO THE REVIEW AND APPROVAL OF THE CITY OF GILBERT AND THE ARIZONA DEPARTMENT OF TRANSPORTATION AND CONSTRUCTION.
 9. THE PROPOSED DEVELOPMENT IS SUBJECT TO THE REVIEW AND APPROVAL OF THE CITY OF GILBERT AND THE ARIZONA DEPARTMENT OF TRANSPORTATION AND CONSTRUCTION.
 10. THE PROPOSED DEVELOPMENT IS SUBJECT TO THE REVIEW AND APPROVAL OF THE CITY OF GILBERT AND THE ARIZONA DEPARTMENT OF TRANSPORTATION AND CONSTRUCTION.
 11. THE PROPOSED DEVELOPMENT IS SUBJECT TO THE REVIEW AND APPROVAL OF THE CITY OF GILBERT AND THE ARIZONA DEPARTMENT OF TRANSPORTATION AND CONSTRUCTION.
 12. THE PROPOSED DEVELOPMENT IS SUBJECT TO THE REVIEW AND APPROVAL OF THE CITY OF GILBERT AND THE ARIZONA DEPARTMENT OF TRANSPORTATION AND CONSTRUCTION.
 13. THE PROPOSED DEVELOPMENT IS SUBJECT TO THE REVIEW AND APPROVAL OF THE CITY OF GILBERT AND THE ARIZONA DEPARTMENT OF TRANSPORTATION AND CONSTRUCTION.
 14. THE PROPOSED DEVELOPMENT IS SUBJECT TO THE REVIEW AND APPROVAL OF THE CITY OF GILBERT AND THE ARIZONA DEPARTMENT OF TRANSPORTATION AND CONSTRUCTION.
 15. THE PROPOSED DEVELOPMENT IS SUBJECT TO THE REVIEW AND APPROVAL OF THE CITY OF GILBERT AND THE ARIZONA DEPARTMENT OF TRANSPORTATION AND CONSTRUCTION.
 16. THE PROPOSED DEVELOPMENT IS SUBJECT TO THE REVIEW AND APPROVAL OF THE CITY OF GILBERT AND THE ARIZONA DEPARTMENT OF TRANSPORTATION AND CONSTRUCTION.
 17. THE PROPOSED DEVELOPMENT IS SUBJECT TO THE REVIEW AND APPROVAL OF THE CITY OF GILBERT AND THE ARIZONA DEPARTMENT OF TRANSPORTATION AND CONSTRUCTION.
 18. THE PROPOSED DEVELOPMENT IS SUBJECT TO THE REVIEW AND APPROVAL OF THE CITY OF GILBERT AND THE ARIZONA DEPARTMENT OF TRANSPORTATION AND CONSTRUCTION.
 19. THE PROPOSED DEVELOPMENT IS SUBJECT TO THE REVIEW AND APPROVAL OF THE CITY OF GILBERT AND THE ARIZONA DEPARTMENT OF TRANSPORTATION AND CONSTRUCTION.
 20. THE PROPOSED DEVELOPMENT IS SUBJECT TO THE REVIEW AND APPROVAL OF THE CITY OF GILBERT AND THE ARIZONA DEPARTMENT OF TRANSPORTATION AND CONSTRUCTION.

NORTH
 23008
 WHITBY
 307 BROOK STREET
 YEDA HOMES
 SITE PLAN
 SCALE: 1:200
A100

KNOWN AS BROCK STREET SOUTH (ROAD ALLOWANCE BETWEEN LOTS 26 AND 27)
 PIN: 1933 (P/1933A/B)
 63.79 (P/6379A/B)
 25503
 4001

LOT 1
 PIN: 2615 (P/2615A/B)
 4146 (P/4146A/B)
 4147 (P/4147A/B)
 4148 (P/4148A/B)
 4149 (P/4149A/B)
 4150 (P/4150A/B)
 4151 (P/4151A/B)
 4152 (P/4152A/B)
 4153 (P/4153A/B)
 4154 (P/4154A/B)
 4155 (P/4155A/B)
 4156 (P/4156A/B)
 4157 (P/4157A/B)
 4158 (P/4158A/B)
 4159 (P/4159A/B)
 4160 (P/4160A/B)
 4161 (P/4161A/B)
 4162 (P/4162A/B)
 4163 (P/4163A/B)
 4164 (P/4164A/B)
 4165 (P/4165A/B)
 4166 (P/4166A/B)
 4167 (P/4167A/B)
 4168 (P/4168A/B)
 4169 (P/4169A/B)
 4170 (P/4170A/B)
 4171 (P/4171A/B)
 4172 (P/4172A/B)
 4173 (P/4173A/B)
 4174 (P/4174A/B)
 4175 (P/4175A/B)
 4176 (P/4176A/B)
 4177 (P/4177A/B)
 4178 (P/4178A/B)
 4179 (P/4179A/B)
 4180 (P/4180A/B)
 4181 (P/4181A/B)
 4182 (P/4182A/B)
 4183 (P/4183A/B)
 4184 (P/4184A/B)
 4185 (P/4185A/B)
 4186 (P/4186A/B)
 4187 (P/4187A/B)
 4188 (P/4188A/B)
 4189 (P/4189A/B)
 4190 (P/4190A/B)
 4191 (P/4191A/B)
 4192 (P/4192A/B)
 4193 (P/4193A/B)
 4194 (P/4194A/B)
 4195 (P/4195A/B)
 4196 (P/4196A/B)
 4197 (P/4197A/B)
 4198 (P/4198A/B)
 4199 (P/4199A/B)
 4200 (P/4200A/B)

LOT 2
 PIN: 4201 (P/4201A/B)
 4202 (P/4202A/B)
 4203 (P/4203A/B)
 4204 (P/4204A/B)
 4205 (P/4205A/B)
 4206 (P/4206A/B)
 4207 (P/4207A/B)
 4208 (P/4208A/B)
 4209 (P/4209A/B)
 4210 (P/4210A/B)
 4211 (P/4211A/B)
 4212 (P/4212A/B)
 4213 (P/4213A/B)
 4214 (P/4214A/B)
 4215 (P/4215A/B)
 4216 (P/4216A/B)
 4217 (P/4217A/B)
 4218 (P/4218A/B)
 4219 (P/4219A/B)
 4220 (P/4220A/B)
 4221 (P/4221A/B)
 4222 (P/4222A/B)
 4223 (P/4223A/B)
 4224 (P/4224A/B)
 4225 (P/4225A/B)
 4226 (P/4226A/B)
 4227 (P/4227A/B)
 4228 (P/4228A/B)
 4229 (P/4229A/B)
 4230 (P/4230A/B)
 4231 (P/4231A/B)
 4232 (P/4232A/B)
 4233 (P/4233A/B)
 4234 (P/4234A/B)
 4235 (P/4235A/B)
 4236 (P/4236A/B)
 4237 (P/4237A/B)
 4238 (P/4238A/B)
 4239 (P/4239A/B)
 4240 (P/4240A/B)
 4241 (P/4241A/B)
 4242 (P/4242A/B)
 4243 (P/4243A/B)
 4244 (P/4244A/B)
 4245 (P/4245A/B)
 4246 (P/4246A/B)
 4247 (P/4247A/B)
 4248 (P/4248A/B)
 4249 (P/4249A/B)
 4250 (P/4250A/B)

LOT 3
 PIN: 4251 (P/4251A/B)
 4252 (P/4252A/B)
 4253 (P/4253A/B)
 4254 (P/4254A/B)
 4255 (P/4255A/B)
 4256 (P/4256A/B)
 4257 (P/4257A/B)
 4258 (P/4258A/B)
 4259 (P/4259A/B)
 4260 (P/4260A/B)
 4261 (P/4261A/B)
 4262 (P/4262A/B)
 4263 (P/4263A/B)
 4264 (P/4264A/B)
 4265 (P/4265A/B)
 4266 (P/4266A/B)
 4267 (P/4267A/B)
 4268 (P/4268A/B)
 4269 (P/4269A/B)
 4270 (P/4270A/B)
 4271 (P/4271A/B)
 4272 (P/4272A/B)
 4273 (P/4273A/B)
 4274 (P/4274A/B)
 4275 (P/4275A/B)
 4276 (P/4276A/B)
 4277 (P/4277A/B)
 4278 (P/4278A/B)
 4279 (P/4279A/B)
 4280 (P/4280A/B)
 4281 (P/4281A/B)
 4282 (P/4282A/B)
 4283 (P/4283A/B)
 4284 (P/4284A/B)
 4285 (P/4285A/B)
 4286 (P/4286A/B)
 4287 (P/4287A/B)
 4288 (P/4288A/B)
 4289 (P/4289A/B)
 4290 (P/4290A/B)
 4291 (P/4291A/B)
 4292 (P/4292A/B)
 4293 (P/4293A/B)
 4294 (P/4294A/B)
 4295 (P/4295A/B)
 4296 (P/4296A/B)
 4297 (P/4297A/B)
 4298 (P/4298A/B)
 4299 (P/4299A/B)
 4300 (P/4300A/B)

LOT 4
 PIN: 4301 (P/4301A/B)
 4302 (P/4302A/B)
 4303 (P/4303A/B)
 4304 (P/4304A/B)
 4305 (P/4305A/B)
 4306 (P/4306A/B)
 4307 (P/4307A/B)
 4308 (P/4308A/B)
 4309 (P/4309A/B)
 4310 (P/4310A/B)
 4311 (P/4311A/B)
 4312 (P/4312A/B)
 4313 (P/4313A/B)
 4314 (P/4314A/B)
 4315 (P/4315A/B)
 4316 (P/4316A/B)
 4317 (P/4317A/B)
 4318 (P/4318A/B)
 4319 (P/4319A/B)
 4320 (P/4320A/B)
 4321 (P/4321A/B)
 4322 (P/4322A/B)
 4323 (P/4323A/B)
 4324 (P/4324A/B)
 4325 (P/4325A/B)
 4326 (P/4326A/B)
 4327 (P/4327A/B)
 4328 (P/4328A/B)
 4329 (P/4329A/B)
 4330 (P/4330A/B)
 4331 (P/4331A/B)
 4332 (P/4332A/B)
 4333 (P/4333A/B)
 4334 (P/4334A/B)
 4335 (P/4335A/B)
 4336 (P/4336A/B)
 4337 (P/4337A/B)
 4338 (P/4338A/B)
 4339 (P/4339A/B)
 4340 (P/4340A/B)
 4341 (P/4341A/B)
 4342 (P/4342A/B)
 4343 (P/4343A/B)
 4344 (P/4344A/B)
 4345 (P/4345A/B)
 4346 (P/4346A/B)
 4347 (P/4347A/B)
 4348 (P/4348A/B)
 4349 (P/4349A/B)
 4350 (P/4350A/B)

GREEN STREET
 PIN: 25502
 4002

4th
 PIN: 2615 (P/2615A/B)
 4146 (P/4146A/B)
 4147 (P/4147A/B)
 4148 (P/4148A/B)
 4149 (P/4149A/B)
 4150 (P/4150A/B)
 4151 (P/4151A/B)
 4152 (P/4152A/B)
 4153 (P/4153A/B)
 4154 (P/4154A/B)
 4155 (P/4155A/B)
 4156 (P/4156A/B)
 4157 (P/4157A/B)
 4158 (P/4158A/B)
 4159 (P/4159A/B)
 4160 (P/4160A/B)
 4161 (P/4161A/B)
 4162 (P/4162A/B)
 4163 (P/4163A/B)
 4164 (P/4164A/B)
 4165 (P/4165A/B)
 4166 (P/4166A/B)
 4167 (P/4167A/B)
 4168 (P/4168A/B)
 4169 (P/4169A/B)
 4170 (P/4170A/B)
 4171 (P/4171A/B)
 4172 (P/4172A/B)
 4173 (P/4173A/B)
 4174 (P/4174A/B)
 4175 (P/4175A/B)
 4176 (P/4176A/B)
 4177 (P/4177A/B)
 4178 (P/4178A/B)
 4179 (P/4179A/B)
 4180 (P/4180A/B)
 4181 (P/4181A/B)
 4182 (P/4182A/B)
 4183 (P/4183A/B)
 4184 (P/4184A/B)
 4185 (P/4185A/B)
 4186 (P/4186A/B)
 4187 (P/4187A/B)
 4188 (P/4188A/B)
 4189 (P/4189A/B)
 4190 (P/4190A/B)
 4191 (P/4191A/B)
 4192 (P/4192A/B)
 4193 (P/4193A/B)
 4194 (P/4194A/B)
 4195 (P/4195A/B)
 4196 (P/4196A/B)
 4197 (P/4197A/B)
 4198 (P/4198A/B)
 4199 (P/4199A/B)
 4200 (P/4200A/B)