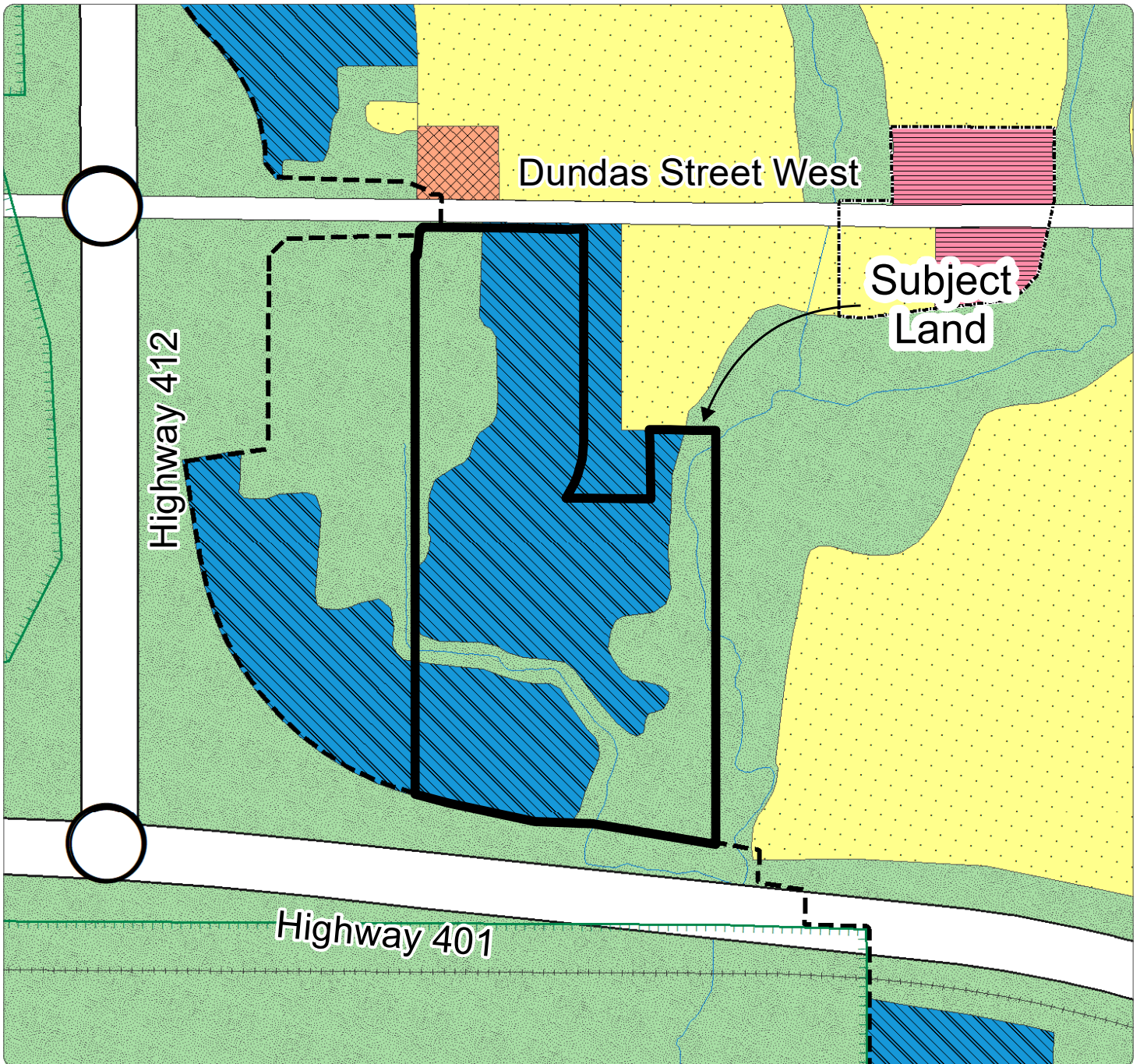


Excerpt from the Town of Whitby Official Plan Schedule 'A'



Legend

	Residential		Lands Subject to Durham Regional Official Plan Policy 14.13.7		D3 (Deferred by Region of Durham)
	Major Commercial		Deferred by the Region of Durham		Local Central Area
	Community Commercial		Resource Extraction Area (See Section 4.12)		Utility
	Special Purpose Commercial				2031 Urban Area Boundary
	Mixed Use				Community Central Area Boundary
	Prestige Industrial				Future Urban Development Area Boundary
	General Industrial				Greenbelt Protected Countryside Boundary
	Special Activity Node				Hamlet Boundary
	Institutional				Major Central Area Boundary
	Major Open Space				Municipal Boundary
	Agricultural				Southern Boundary of Oak Ridges Moraine
	Hamlet				Urban Central Area Boundary
	Estate Residential				
	Special Policy Area Refer to section 11.5.31.6				

Notes: Refer to the applicable Secondary Plan for more detailed land use designations. Secondary Plan boundaries can be found on Schedule 'E', including the Oak Ridges Moraine Secondary Plan. Some legend items may not appear on the displayed figure extent.

Official Plan - Town of Whitby

Schedule

Excerpt from Schedule 'A' Land Use

A

This schedule forms part of the Official Plan of the Town of Whitby and must be read in conjunction with the written text. For all intents and purposes, the elements within this schedule are to be considered conceptual.