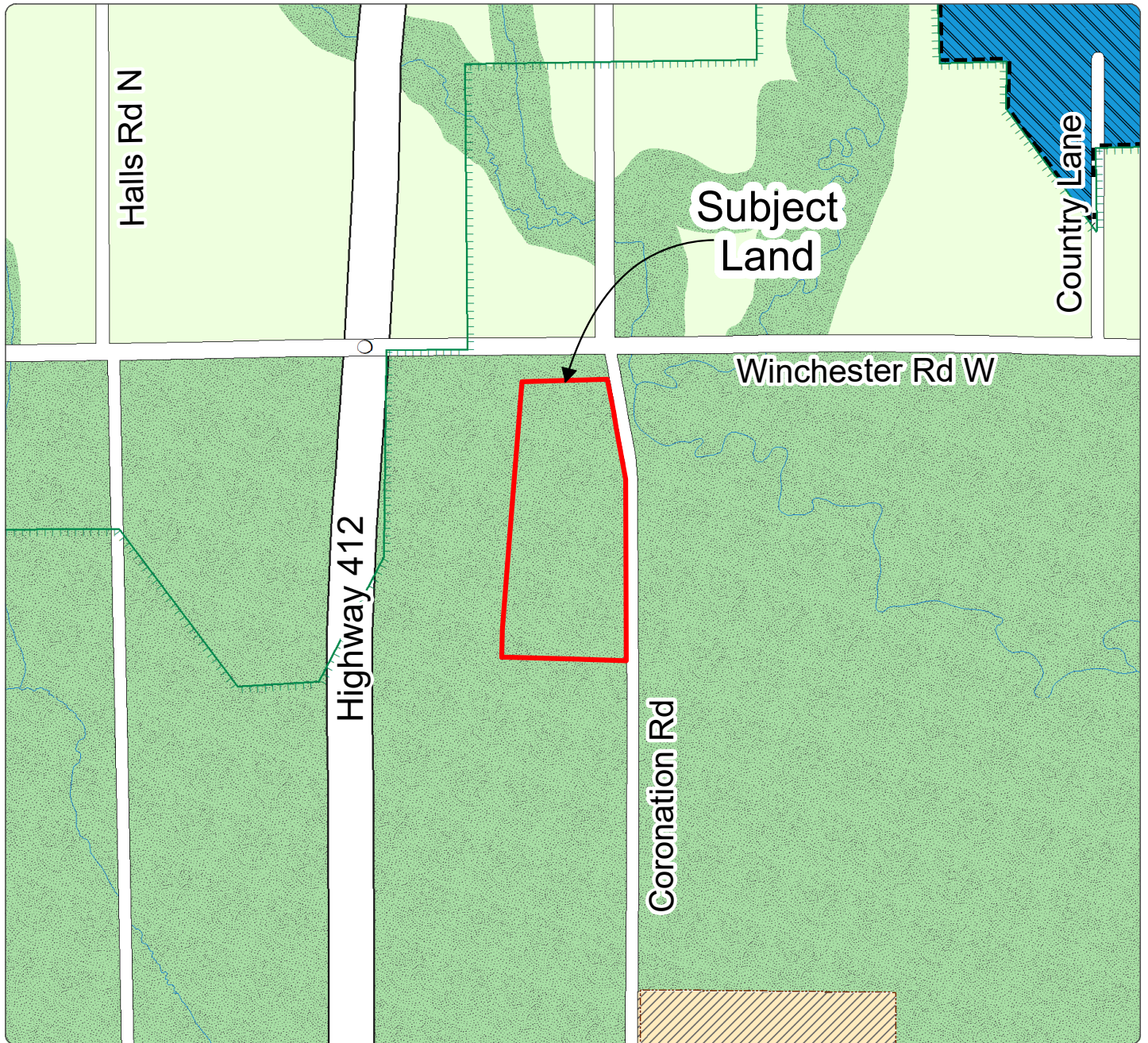


Excerpt from Town of Whitby Official Plan
Schedule 'A' – Land Use



Legend

Residential	Lands Subject to Durham Regional Official Plan Policy 14.13.7	D3 (Deferred by Region of Durham)
Major Commercial	Deferred by the Region of Durham	
Community Commercial	Local Central Area	
Special Purpose Commercial	Resource Extraction Area (See Section 4.12)	
Mixed Use	Utility	
Prestige Industrial	2031 Urban Area Boundary	
General Industrial	Community Central Area Boundary	
Special Activity Node	Future Urban Development Area Boundary	
Institutional	Greenbelt Protected Countryside Boundary	
Major Open Space	Hamlet Boundary	
Agricultural	Major Central Area Boundary	
Hamlet	Municipal Boundary	
Estate Residential	Southern Boundary of Oak Ridges Moraine	
Special Policy Area	Urban Central Area Boundary	
Refer to section 11.5.31.6		

Notes: Refer to the applicable Secondary Plan for more detailed land use designations. Secondary Plan boundaries can be found on Schedule 'E', including the Oak Ridges Moraine Secondary Plan. Some legend items may not appear on the displayed figure extent.

Official Plan - Town of Whitby

Excerpt from Schedule 'A' Land Use

Schedule **A**

This schedule forms part of the Official Plan of the Town of Whitby and must be read in conjunction with the written text. For all intents and purposes, the elements within this schedule are to be considered conceptual.