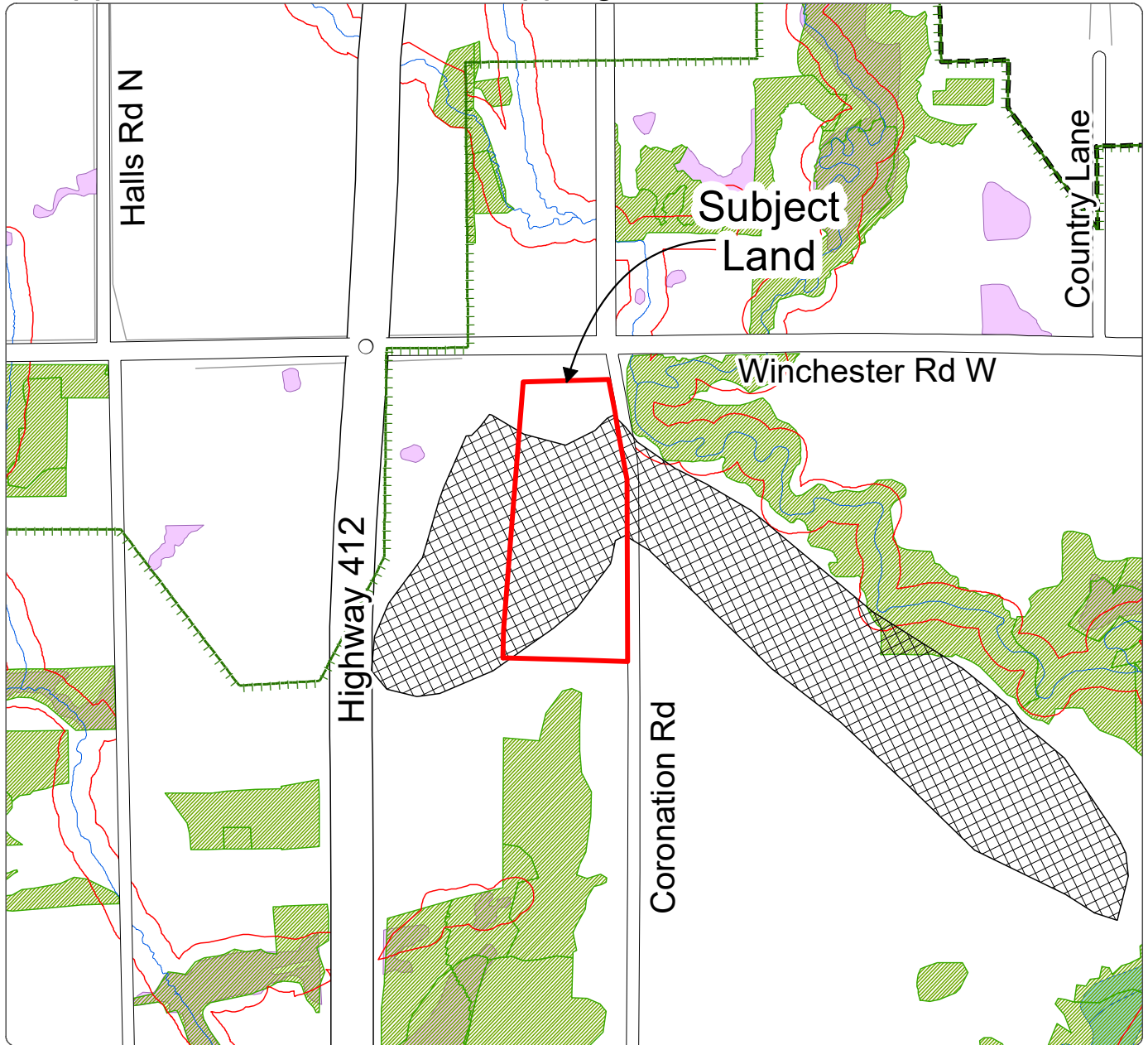


Excerpt from Town of Whitby Official Plan
 Appendix '1' – Technical Mapping of Environmental Elements



Legend

- 2031 Urban Area Boundary
- Greenbelt Protected Countryside Boundary
- Municipal Boundary
- Southern Boundary of Oak Ridges Moraine
- Watercourse
- Riparian Corridors
- Areas of Natural and Scientific Interest (ANSI) (LIO, 2016)
- High Potential Aggregate Resource Area (MNR, 2015)
- Sand and Gravel Resources - Secondary Significance
- Lands Subject to Durham Regional Official Plan Policy 14.13.7
- Provincially Significant Wetland (LIO, 2024)
- Wetland (Evaluated as Other / Not Evaluated) (LIO, 2024)
- Woodlands

Note: Some legend items may not appear on the displayed figure extent.

Official Plan - Town of Whitby

Appendix

Excerpt From Appendix '1'

Technical Mapping of Environmental Elements

1

This appendix does not form part of the Statutory Official Plan. The information contained herein may be updated without amendment when new information is available.