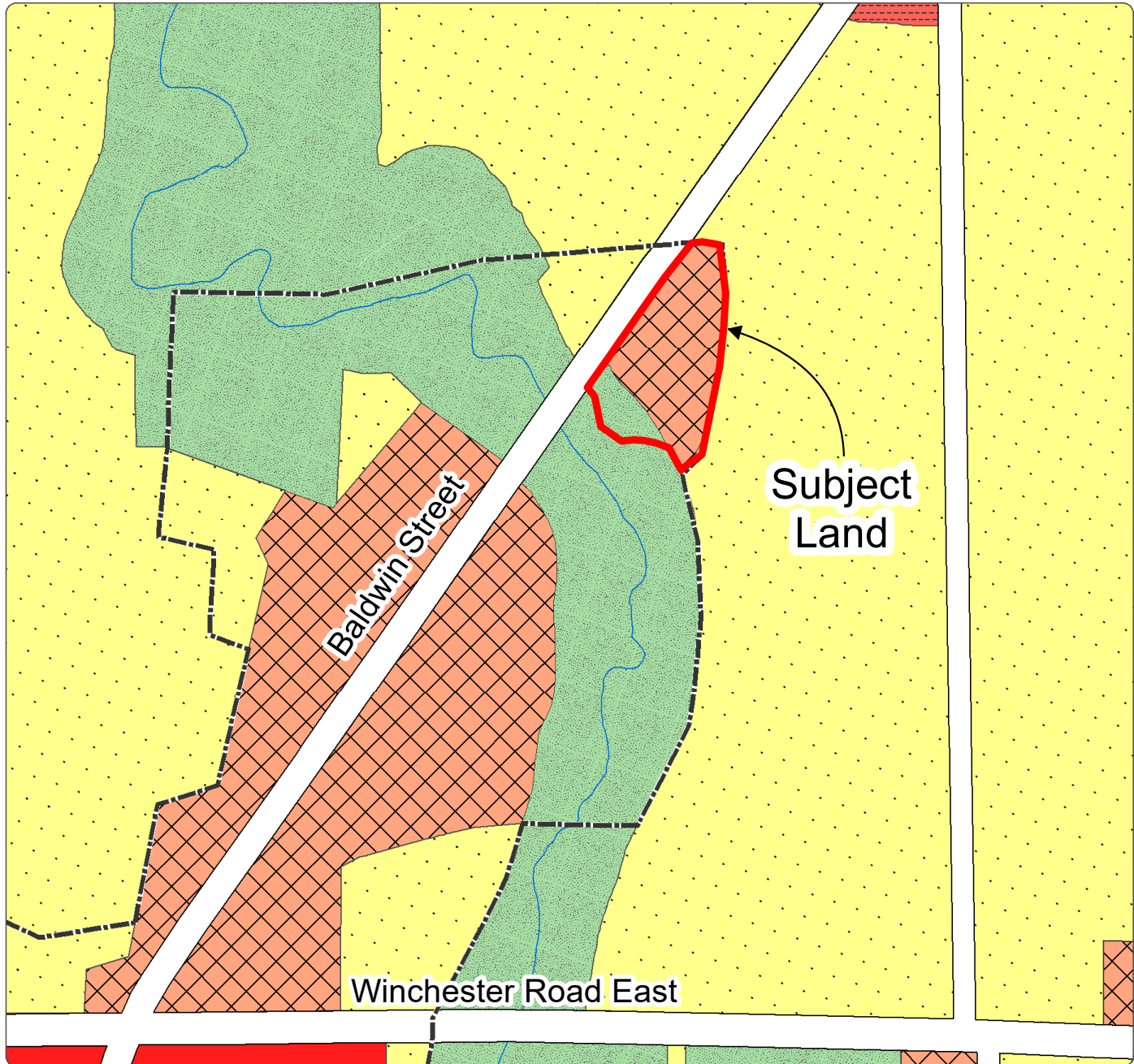


Excerpt from the Town of Whitby Official Plan Schedule 'A'

**Legend**

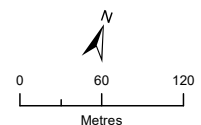
	Residential		Lands Subject to Durham Regional Official Plan Policy 14.13.7		D3 (Deferred by Region of Durham)
	Major Commercial		Deferred by the Region of Durham		
	Community Commercial		Local Central Area		
	Special Purpose Commercial		Resource Extraction Area (See Section 4.12)		
	Mixed Use		Utility		
	Prestige Industrial		2031 Urban Area Boundary		
	General Industrial		Community Central Area Boundary		
	Special Activity Node		Future Urban Development Area Boundary		
	Institutional		Greenbelt Protected Countryside Boundary		
	Major Open Space		Hamlet Boundary		
	Agricultural		Major Central Area Boundary		
	Hamlet		Municipal Boundary		
	Estate Residential		Southern Boundary of Oak Ridges Moraine		
	Special Policy Area		Urban Central Area Boundary		
Refer to section 11.5.31.6					
Notes: Refer to the applicable Secondary Plan for more detailed land use designations. Secondary Plan boundaries can be found on Schedule 'E', including the Oak Ridges Moraine Secondary Plan. Some legend items may not appear on the displayed figure extent.					

Official Plan - Town of Whitby

Schedule

Excerpt from Schedule 'A' Land Use

A



This schedule forms part of the Official Plan of the Town of Whitby and must be read in conjunction with the written text. For all intents and purposes, the elements within this schedule are to be considered conceptual.